

**Form 43 -101F1
TECHNICAL REPORT**

INDEPENDENT PRELIMINARY ASSESSMENT

ZARUMA PROJECT

EL ORO PROVINCE - ECUADOR

PREPARED FOR DYNASTY METALS & MINING INC.

Authors:

W J Holly MAustIMM FFin

Holly Mining Pty Ltd, 34 Johnston St, Peppermint Grove WA 6011 Australia
Email : wholly@iinet.net.au

A J Maynard MAIG MAusIMM

Al Maynard & Associates, Suite 9, 280 Hay St, Subiaco WA Australia
Email : al@geological.com.au

Date: 21 August 2006

Prepared for: Dynasty Metals & Mining Inc.
Suite 270
660 Burrard St
Vancouver B.C. Canada V6CZ8

TABLE OF CONTENTS

SUMMARY	5
1. INTRODUCTION AND TERMS OF REFERENCE	10
2. RELIANCE ON OTHER EXPERTS	12
3. PROPERTY DESCRIPTION AND LOCATION	13
4. ACCESSIBILITY, CLIMATE, LOCAL RESOURCES, INFRASTRUCTURE, AND PHYSIOGRAPHY	16
5. HISTORY	17
6. GEOLOGICAL SETTING	19
7. DEPOSIT TYPES	25
8. MINERALISATION	25
9. EXPLORATION	25
10. DRILLING	27
11. SAMPLING METHODS AND APPROACH	27
12. SAMPLE PREPARATION, ANALYSES AND SECURITY	27
13. DATA VERIFICATION	29
14. ADJACENT PROPERTIES	32
15. MINERAL PROCESSING AND METALLURGICAL TESTING	32
16. MINERAL RESOURCE AND MINERAL RESERVE ESTIMATES	35
16.1 Mine Planning	35
16.1.1 Planning Method and Mining History	36
16.1.2 South American Development Company	36
16.1.3 Old Mining Operations – SADCO	36
16.1.4 1940 Production Records	37
16.1.5 Operations after SADCO – (post 1950)	37
16.1.6 IAMGOLD and Dynasty	37
16.2 Deeper Mining Potential for Zaruma	38

16.3	Exploration Potential -	38
16.4	Preliminary Assessment – Economic Evaluation of Mineral Resources	41
16.4.1	Stage 1 – Measured and Indicated Resources	41
16.4.2	Stage 2 – Inferred Resources	42
16.5	Mining Methods	43
16.5.1	Underground Mine	43
16.5.2	Mine Plan for Zaruma Project – B Speechly – 2006	43
16.6.	Capital and Operating Costs	44
16.6.1	Capital	44
16.6.2	Operating Costs	44
16.7.	Basic Economics of Operation	45
16.7.1	Stage 1 Evaluation – Measured and Indicated Resources	45
16.7.2	Stage 2 Evaluation – Inferred Resources	46
17.	OTHER RELEVANT DATA AND INFORMATION	47
18.	INTERPRETATIONS AND CONCLUSIONS	48
19.	RECOMMENDATIONS	51
20.	REFERENCES AND SOURCES OF INFORMATION	52
21.	DATE AND SIGNATURE PAGE	53
22.	CERTIFICATES OF QUALIFIED PERSONS	54
23	ADDITIONAL REQUIREMENTS FOR TECHNICAL REPORTS ON DEVELOPMENT PROPERTIES AND PRODUCTION PROPERTIES	59
24	ILLUSTRATIONS	60

LIST OF FIGURES

Figure 1 – Location Map	1:4,000,000
Figure 2 – Land Tenements Owned or Controlled by Dynasty Metals & Mining Inc.	1:100,000
Figure 3 – Zaruma Project Geological Map	1:125,000
Figure 4 – Typical High-Grade Vein, Zaruma-Portovelo District	
Figure 5 – Banded Textures Cristina Vein, Zaruma	
Figure 6 – Mineable Vein Width up to 6 m Jane Vein, Zaruma	
Figure 7 – Mineralization Zonation in the Zaruma – Portovelo Mining District	1:100,000
Figure 8 – Soil Geochemical Gold Anomaly Map of Zaruma Project Showing Major Exploration Target Areas	1:125,000

LIST OF TABLES

Table 1 - Total Mineral Resources in the Zaruma Gold Project
Table 2 - Measured and Indicated Resources – Included in Mine Plans
Table 3 – SADCO Production Records 1940
Table 4 – Preliminary Assessment – 50% of Inferred Resources
Table 5 - Basic Economics of Zaruma Underground Resource
Table 6 - Possible Economics of Inferred Resources

SUMMARY

This Preliminary assessment report has been prepared by Consulting Mining Engineer WJ Holly MAusIMM F Fin, and Consulting Geologist Mr AJ Maynard MAIG, MAusIMM. Mr Holly has undertaken investigations in respect of the mining, treatment, economic analysis and development potential of the property, and Mr Maynard has verified previous geological and resource information from previous technical reports in respect of sections 6 to 14 of this report..

The Zaruma Gold Project comprises 44 concessions covering a total area of 10,273.07 hectares in a readily assessable region of southern Ecuador. The gold mineralization found on the concessions is associated with an extensive high grade gold and silver epithermal vein system.

This Preliminary Assessment Report was prepared by the author at the request of Dynasty Metals & Mining Inc. (“Dynasty” or the “Company”) and is based on:

- a site visit in March 2006;
- interviews with Company management and other consultants engaged to assist management with its mine plans;
- a review of the Company’s Technical Reports in particular that dated October 21, 2005 prepared by Allen J. Maynard (BappSc, MAIG, MAusIMM), and that dated 22 October 2004 prepared by Marislav Kalinaj (BSc (Hons) MSc Fellow Society of Economic Geologists USA), who are both independent “Qualified Persons” as defined in National Instrument 43-101;
- a review of the Company’s proposed mine plan prepared by Brian Speechly FAusIMM a mining consultant of extensive experience who is a “Qualified Person” as defined in National Instrument 43-101, but is a director of the Company and therefore not independent;
- a review of the Company’s proposed plant design prepared by Keith Dodd AWASM Eng. Mr Dodd has extensive experience, and is an independent “Qualified Person” as defined in National Instrument 43-101; and
- a review of commodity prices and recent commodity trends

The principal conclusions from the author’s assessment are as follows:

Scale of Operations

The Company plans to construct a mill capable of processing 250,000 tonnes of ore per year with plans to process 2,393,700 tonnes of Measured and Indicated ore over the initial life of the mine, which is approximately 10.5 years. The proposed annual rate of production is optimum when the nature of the ore body is considered. The mineralization

is primarily hosted in a series of narrow (1.2m wide) veins, which are rich in gold and silver.

Preliminary estimates of capital requirements are anticipated to be relatively low at US\$25 million. This includes US\$8,000,000 for site preparation and mine development, and US\$17,000,000 for the mill, treatment plant and infrastructure.

Processing Alternatives

For the purpose of this assessment, the author has based his assessment on recommendations by Consulting Engineer KC Dodd for a flotation concentrator together with a Merrill Crow or CIP plant.

Resource Base

In his Technical Reports dated October 21, 2005, Allen J. Maynard BappSc, MAIG, MAusIMM estimated resources as follows:

	CATEGORY	TONNES	Au oz/t	Au g/t	Au ozs
(rounded) TOTALS	Measured Resource	1,568,000	0.45	13.93	702,100
	Indicated Resource	915,000	0.45	13.87	408,100
	Inferred Resource	3,382,000	0.41	12.72	1,383,400

Table 1 : Total Mineral Resources at Zaruma Gold Project

The Company has developed an initial (Stage 1) mine plan (over approximately 10.5 years) in which 2,393,700 tonnes of ore from its Measured and Indicated Resources are processed.

The Company has estimated that the life of the mine could be extended by approximately 6.75 years if it can successfully convert 50% of the Company's Inferred Resources into Measured and Indicated Resources after additional development and exploration work is completed.

As required by National Instrument 43-101, it should be noted that these evaluations are preliminary in nature and that the Inferred Resources in particular are considered too speculative geologically to have economic considerations applied to them that would enable them to be categorized as Mineral Reserves. As such there is no certainty that the Preliminary Assessment will be realized.

Economic Assessment

Stage 1 – predominantly Measured and Indicated Resources

The Zaruma Gold Project has sufficient Measured and Indicated resources (as indicated in Table 2 above) to support a 10.5 year mine plan that would generate the following pre-tax cash flows from operations less mining development and site preparation costs of US\$8 million and treatment plant and infrastructure costs of \$17m (see Table 5). These results are not discounted.

	<u>Total</u>
Revenues (post royalty)	USD 452 million
Operating Costs	<u>USD 162 million</u>
Operating Surplus	<u>USD 290 million</u>

These preliminary estimates are based on:

- current resource tonnages, grades and mine plans
- preliminary estimates of overall metallurgical recoveries
- preliminary estimates of overall operating costs and capital costs pertaining to the treatment and mining methods proposed
- preliminary estimates of short to medium term metal prices

The estimated cost per ounce of gold for Stage 1 underground mining of predominantly Measured and Indicated Resources is estimated to be US\$174 per ounce.

Stage 2 – 50% of Inferred Resources

In addition to the discounted Measured and Indicated Resources set out above the Company has estimated that 50% of ore currently categorized as Inferred Resources may be converted into Measured and Indicated resources after further drilling and development has taken place. Assuming this occurs such resources would extend the life of the mine by 6.75 years and generate additional cash flows from underground operations as follows (See Table 6 for detail);

	<u>Total</u>
Revenues (post royalty)	USD 292 million
Operating Costs	<u>USD 115 million</u>
Operating Surplus	<u>USD 177 million</u>

The estimated cost per ounce gold for Stage 2 underground mining (50% of Inferred Resources) is estimated to be USD191 per ounce.

Critical Risk Factors

The critical risk factors associated with the project are as follows:

- Resource risk – tonnage and grade uncertainty in previously mined areas
- Dilution risk – dilution is fairly high in narrow vein operation, although ameliorated by defined limits to the veins and competent wall rocks.– estimates range from 15% - 30%. (15% has been used in Economic Assessments in Stages 1 & 2 above)
- Productivity risk – narrow vein operation does not allow a high production rate – 250,000 tpy proposed – any reduced productivity would impact on unit costs
- Mining cost risk – mining costs are rising in current world market - effect should be offset by lower labour costs in Ecuador
- Metallurgical risk – ongoing test work needs to be completed to ensure treatment plant is able to achieve high metallurgical recovery. A conservative estimate of 87% has been used in the above Stage 1 & Stage 2 Economic Assessments.
- Sovereign, Country, Geographical and Topographical risk

Whilst this Preliminary Assessment is preliminary in nature, future feasibility studies will give closer attention to the above factors to ameliorate these risks to the project.

Notwithstanding, once the mine has achieved steady state operation, it is anticipated that the overall risk level will be relatively low.

Estimated Cost per Ounce Gold

Stage 1 (predominantly Measured & Indicated Resources):	\$174
Stage 2 (50% of Inferred Resources):	\$191

Recommendations

The author believes that the overall project risk is low and the potential for profitable operations is high and therefore recommends that Dynasty proceed towards the development of a feasibility study.

The author also recommends that exploration drilling and sampling continues in order to determine potential new resources from veins in the northern sector of the property and from extensions of known veins

Development Strategy – Pilot Plant and Trial Mining

It is recommended that Dynasty continue with the construction of the treatment plant at Zaruma which is currently being undertaken. Simultaneously the proposed North West Decline should be established to access the ore bodies, allow grade control drilling, ore reserve definition and mining costs. The ore won from the development should be treated in the treatment plant on a pilot plant basis to gain final definition of ore quality, process

confirmation and metallurgical recoveries. Information gained from this development strategy will be key to the preparation of a definitive feasibility study for the Zaruma operation.

Ownership

The Zaruma property comprises 44 concessions which are held 100% by Dynasty Metals and Mining Inc.

Exploration Concept

Zaruma is a an historic mining field based on the mining of narrow high grade quartz veins rich in gold silver and in some cases base metals. The exploration concept has been to utilise old mining records, mining development and sampling, surface mapping and exploration drilling to prove up resources which can be profitably mined.

Status of Exploration Development and Operations

Dynasty has inherited exploration data from the previous owners of the Zaruma property (TVX and IAMGOLD). A Technical Report was completed in respect of this data by Independent Qualified Person M Kalinaj BSc MSc and dated 22 October 2004. Subsequently an underground sampling programme was undertaken by Dynasty and further Technical Report was prepared by A Maynard BAppSc(Geol) MAusIMM and dated 21 October 2005. Both reports quoted mineral resources.

Dynasty propose to undertake underground development to access the resources, and to construct a pilot treatment plant to allow a trial mining operation.

1. INTRODUCTION AND TERMS OF REFERENCE

1.1 Introduction

The Zaruma property area comprises 44 concessions covering a total area of 10,273.07 ha.

The Zaruma Project is located in the cantons of Zaruma and Portovelo, Province of El Oro, Ecuador and is centred at latitude 03°41'20" south and longitude 79°36'31" west. (See Figures 1 and 2).

Access to the Zaruma Project is primarily by paved roads to the general area and thence via tracks on steep hills in certain parts. Zaruma and Portovelo are towns and have a population of about 20,000 people most of whom are dependent on small near surface gold mining operations. The towns have a strong underground mining culture.

The Consultants have been advised that mineral rights are held 100% by Dynasty Metals & Mining Inc. The majority of concessions are subject to a 3% royalty.

1.2 Terms of Reference

The writers have been requested by the Directors of Dynasty Metals & Mining Inc. to undertake a Preliminary Assessment (as defined by NI 43-101) of the Zaruma Project which involves the mining and treatment of the mineral resources within the traditionally gold and polymetallic Zaruma-Portovelo mining district in volcanics of the Cordillera Occidental of Andes mountain range.

For the purpose of this Technical Report the writers, W J Holly and A.J. Maynard are independent "Qualified Persons" in accordance with National Instrument 43-101.

1.3 Report Purpose

This report is to be submitted to regulatory bodies including the British Columbia Securities Commission and is to be used by the Company to raise funds for the preparation of a bankable feasibility study, and further exploration.

1.4 Field Involvement

The writer, W J Holly, visited the Zaruma Gold Project on 1st-3rd March 2006 in company with project geologist Luis Bravo and other Dynasty personnel. This site work included underground and surface observations of exploratory development over the extensive vein system described below. The work is being carried out by small mining contractors and has provided valuable exposure of the vein structure, country rock and mineralization. The field trip gave the author a detailed appreciation of the topography,

and town infrastructure of the Zaruma Portovelo field in relation to the ore bodies and proposed mining operations.

Co-author A.J. Maynard made a site trip to the Zaruma project area on two separate occasions. The most recent was March, 2005.

1.5 Sources of Information and Data

The sources of information for this report are

- Information provided by Dynasty staff in particular B Speechly (Technical Director, R Washer (President CEO and Director and G Whitfield (Exploration Manager)
- Historic reports detailed in the section entitled References and Sources of Information
- Report and information by Consulting Engineer KC Dodd

1.5.1 Reliance on Other Experts

In the compilation of this Preliminary Assessment much of the geological, resource and general information is sourced from two technical reports –

- “Zaruma Project, Ecuador, Technical Report” by Kalinaj 22 October 2004
- “Independent Geological Evaluation, Zaruma Project, Ecuador” by Maynard 21 October 2005

Miroslav Kalinaj is a consulting geologist who has an M.Sc degree from Komensky University, Bratislava, Czechoslovakia, granted in 1989. He has been practising continuously for the past seventeen years in Ecuador and Peru. Mr Kalinaj is a member of the Association of Mining Engineers and Geoscientists of Peru License # 1599 and a Fellow of the Society of Economic Geologist in USA.

Allen J Maynard (who is also a co-author of this Preliminary Assessment) has worked as a geologist in the field of mineral exploration continuously for the last 28 years in Australia, Cambodia, Chile, China, Ecuador, Egypt, Greenland, Indonesia, Mauritania, Mozambique, Peninsular Malaysia, Peru, Philippines, Portugal, Republic of South Africa, Turkey, Zimbabwe and mid-west USA (Wyoming, Colorado). He is a graduate of Curtin University in the State of Western Australia with a degree of Bachelor of Applied Science, majoring in Geology granted in 1978 (Certificate No. 10534).

Mr B Speechly

For the mine plan, the writer has utilized the mining plan prepared by Mr B Speechly. Mr B. Speechly being a director of the Company and is not an independent person under NI 43-101. Mr Speechly has over 40 years experience of the mining industry, covering numerous projects particularly gold mines.

Mr Speechly is Fellow of the Australasian Institute of Mining and Metallurgy.

Mr KC Dodd

The writer has utilised the plant design and costs which were prepared by Mr K C Dodd. Mr K C Dodd is a qualified mechanical engineer and is an Independent “Qualified Person” under NI 43-101. He has over 40 years of experience in the mining industry, particularly the gold mining industry. During this time he has constructed many plants of a similar nature to that proposed for the Zaruma Project. Mr Dodd is a Fellow of the Australasian Institute of Mining and Metallurgy.

Estimates of underground operating cost have been based on Peruvian operations and on cost estimates of other local operators at Zaruma. The costs have been adopted following discussions with Dynasty directors B Speechly and R Washer, and following phone calls to Miroslav Kalinaj who has been involved in operations in Peru for many years.

2. RELIANCE ON OTHER EXPERTS

In preparing this Technical Report the authors have relied substantially upon detailed discussions with staff, consultants, and directors of Dynasty and on technical information compiled by them. The information has been provided by professionals who are Qualified Persons and it is considered by the authors to be accurate.

The primary resource report by Kalinaj entitled “Zaruma Project, Ecuador, Technical Report” 22 October 2004 is based on reports prepared by IAMGOLD Corporation, historic data and reports of South American Development Company (“SADCO”), Ecuamining S.A. and TVX Gold Corp. Many of these were written prior to the implementation of the Standards of National Instrument 43-101, however they were written by professionals and are considered to be accurate.

The authors have not personally reviewed the registered ownership, nor option agreements, covering the property and claims of Dynasty Metals and Mining, known as the Zaruma Project. The reader is therefore cautioned that the ownership of the project has not been verified by the authors.

All projections and opinions in this report have been prepared on the basis of information made available to the authors, and are subject to uncertainties and contingencies which are difficult to accurately predict. Notwithstanding the authors have reviewed a draft version of the report and considers it to be a true and accurate representation of the Preliminary Assessment of the potential viability of the Zaruma Project.

In preparation of the mining, treatment and economic evaluation sections of this report, WJ Holly has relied upon previous technical reports by Miroslav Kalinaj and Allen J

Maynard for certain sections of this Technical Report, especially concerning sections 6 - 14 involving geology and resource estimation. Mr Kalinaj and Mr Maynard are both qualified persons under NI 43-101. The information contained in those technical reports has been utilised with the assumptions that it is true and correct. In the opinion of WJ Holly, this is a reasonable assumption, and he has no reason to believe that there have been any material changes in the information supplied therein. However WJ Holly has not verified the information in the technical reports.

WJ Holly has also relied upon the mine plan prepared by Brian Speechly, a director of Dynasty, and the plant and costs prepared by KC Dodd. WJ Holly has reviewed and accepts the mine plan and the plant and design costs as a reasonable basis for the conclusions in this technical report.

The authors have not relied on a report or statement of an expert who is not a qualified person.

3. PROPERTY DESCRIPTION AND LOCATION

The Zaruma property area comprises 44 concessions covering a total area of 10,273.07 ha.

The Zaruma Project is located in the cantons of Zaruma and Portovelo, Province of El Ore, Ecuador and is centred at latitude 03°41'20" south and longitude 79°36'31" west. (See Figures 1 and 2). The project is situated about 175 kilometres south and 60 kilometres southeast of the major port cities of Guayaquil and Machala, respectively (Figure 1).

Access to the Zaruma Project is primarily by paved roads to the general area and thence via tracks on steep hills in certain parts.

Mineral rights are held 100% by Dynasty. For details of individual concessions owned and/or controlled by the Company see previous report by Marislav Kalinaj dated 22nd October 2004.

Mineral rights on the combined "Zaruma holdings" are held by Dynasty.

At the project site, hill slopes are moderately steep to very steep with elevations ranging from the 1040 to 1600m above sea level. Being traditionally a mining district, areas which are not disturbed by mining activity are used for farmlands, grazing and local minor secondary forestry. Dynasty's proposed decline mining developments are underground and consequently will involve minimal disruption to current surface activities.

The climate is subtropical and humid with temperatures ranging from 18° to 30° C. Yearly rainfall averages 1,341mm.

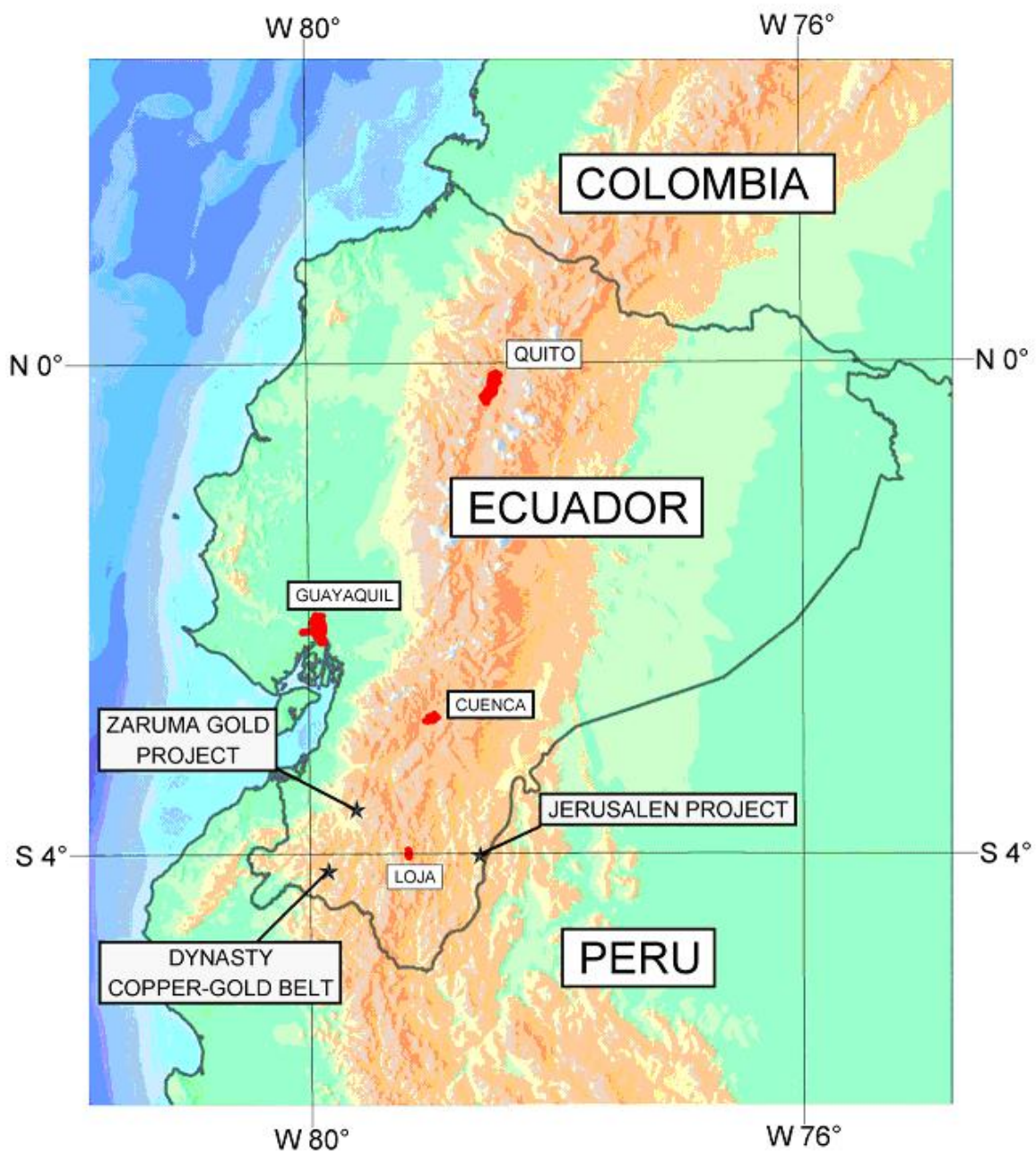


Figure1
Location Map

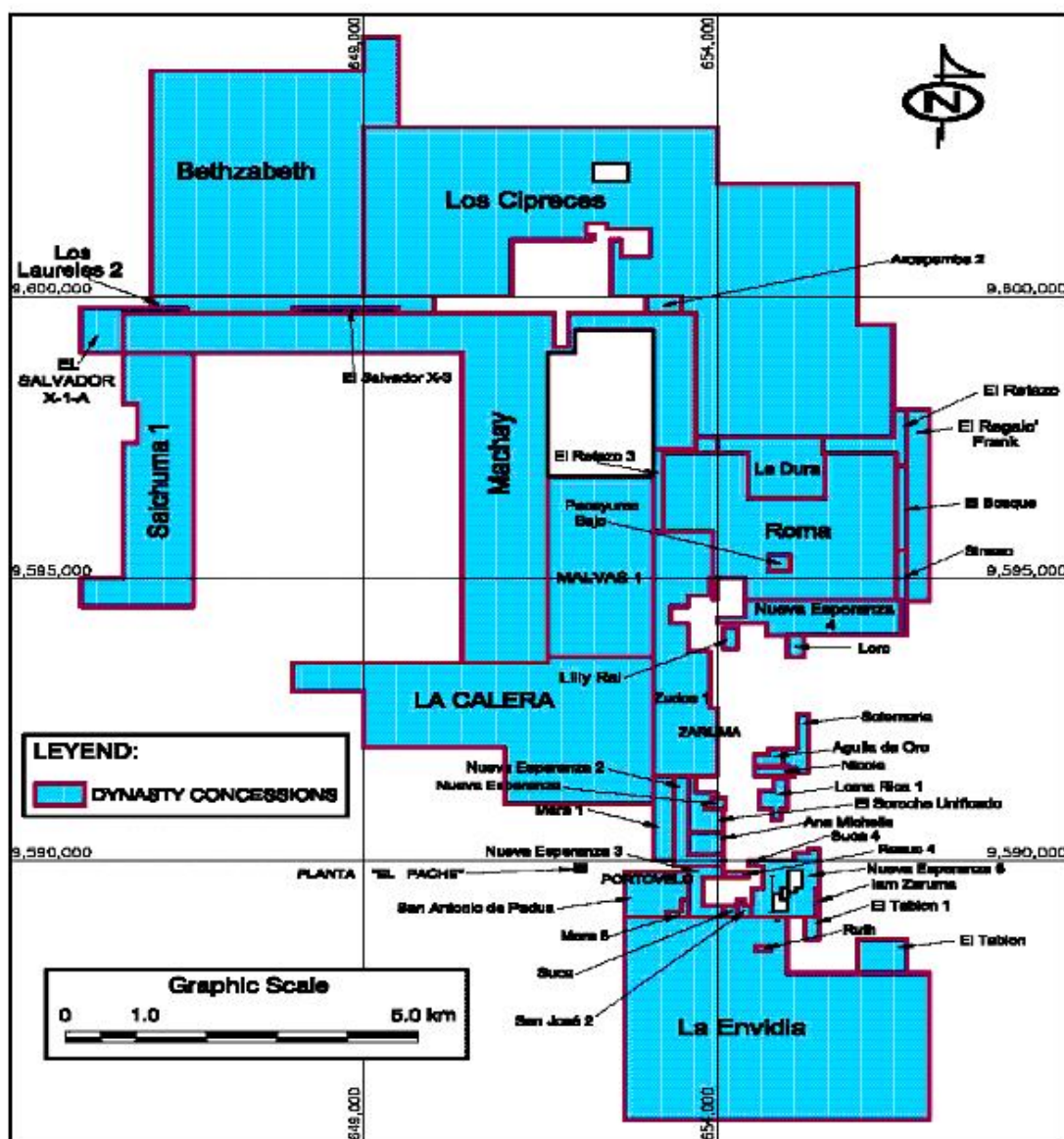


Figure 2

Land Tenements Owned or Controlled by Dynasty Metals & Mining Inc.

4.0 ACCESSIBILITY, CLIMATE, LOCAL RESOURCES, INFRASTRUCTURE AND PHYSIOGRAPHY

4.1 Location

The Zaruma Project is situated in El Oro Province of southern Ecuador, about 175 kilometres south and 60 kilometres southeast of the major port cities of Guayaquil and Machala respectively (Figure 1). The centre of the property is located on 654,500 East and 9,592,000 North (UTM PSAD-56, zone 17S) or longitude 79° 36' 31" West and latitude 3° 41' 20" South (Provisional South American 1956 projection).

4.2 Access

Good asphalted roads provide access to the mining towns of Zaruma and Portovelo about 2 hours drive from the city of Machala. Access on the project area is facilitated by a relatively dense network of secondary roads. The project area is also traversed by a main highway to the city of Loja.

4.3 Climate and Physiography

The property lies on the western flank of the Cordillera Occidental of Andes mountain range. Hill slopes are moderately steep to very steep with elevations ranging from the 1040 to 1600m a.s.l. Being traditionally a mining district, areas which are not disturbed by mining activity are used for farmlands, grazing and local minor secondary forestry. The climate is subtropical and humid with temperatures ranging from 18° to 30° C. Yearly rainfall averages 1,341mm (1985 to 1994 in Clavijo, 1998), with heaviest rainfalls occurring in the months of January to June.

4.4 Local Resources

The location of two medium-sized cities namely Zaruma with population of 29,000 and Portovelo with population of 14,000 within the Project area would provide both the labour force and all other facilities a mining operation needs e.g. hotels, food supply, material supply, communication resources, public security and government institution representatives. A strong mining background for the district guarantees skilled workers for underground mining and the availability of basic mining-related material in the Project area. High-tension power lines providing electricity are connected to both Zaruma and Portovelo and the Rio Amarillo and Rio Calera rivers are able to supply adequate water for large scale mining operations throughout the year.

5. HISTORY

The hills of Zaruma and Portovelo have been mined for gold and silver for centuries. The Incas were already extracting gold and silver in the area with hydraulic mining of the oxidized parts of veins when Mercadillo, one of Pizarro's force, followed the Rio Amarillo River upstream and encountered the Inca mine and founded the town of Zaruma in 1549 (Billingsley, 1926). Exploitation of the Zaruma and Portovelo districts continued during the time of Spanish colonization until 1870 when an Ecuadorian-Chilean company was established.

In 1880, Grant Zaruma Company, from England, bought controlling shares of a newly-formed Ecuadorian-Chilean mining company. Operational rights were immediately endorsed to Southern American Development Company (SADCO), an American company, who operated the mine from 1897 to 1950 by gaining control of the district's main gold deposits in 1897. Exploration programmes of SADCO commenced in 1896 and brought the mine into production at 108t/day in 1905. The mine was subsequently deepened to 13 level located at an elevation of 270m above sea level, 800m below the uppermost workings (PRODEMINCA, 2000 in Spencer, R.M. et al., 2002). In the 53 years that followed, SADCO recovered some 3.5 million ounces of gold and 12 million ounces of silver from 7.6 million tonnes of ore at a cut-off grade of 14.4 g/t Au and 48.9 g/t Ag (Van Thournout et al., 1996).

After the lower levels of the Portovelo mine were flooded in 1944 and facing increasing costs, taxes and a complicated political situation, SADCO finally withdrew from the country in 1950 and the Ecuadorian government took over the mine. A state-owned company, CIMA, took over the mining operations in the area until 1980 and it is estimated to have produced a further 375,000 oz of gold by 1965. In 1984, thousands of poverty-stricken miners invaded the old SADCO pits and small-scale and artisan mining has been going on in the area ever since. An additional 35,000 to 50,000 oz of gold has been produced each year since then by informal miners, small-scale operating mining societies and principally from the family-owned BIRA. In the 1990's statistical information, mining from the Zaruma and Portovelo areas totalled 3 million tonnes (INEMIN – CODIGEM, 1990, in Jemielita and Bolaños, 1993).

In the mid-1990s several overseas companies attempted to consolidate the area and carried out systematic exploration programmes. In 1995, the Canadian-based TVX Corporation reached agreement with most of the Zaruma area mining societies and informal miners and started with underground and surface mapping particularly within the Zaruma and Muluncay areas from March 1995 until February 1996.

After TVX Corp. withdrew from Ecuador in 1998 all information was acquired by IAMGOLD. IAMGOLD continued with more extensive exploration programmes including surface trenching, surface and underground sampling, surveying and diamond drilling. IAMGOLD significantly improved the Zaruma Project area with legal consolidation of titles, adding valuable information to the project database, employing systematic geochemical data quality control and undertaking geological modelling.

In August 2003, all the IAMGOLD properties and the project database were transferred to Dynasty Metals and Mining Inc which continued the exploration up to date of this report.



View of the old SADCO vertical shaft in Portovelo

6. GEOLOGICAL SETTING

Refer to previous report by Miroslav Kalinaj – Zaruma Project – Ecuador – Technical Report – 22 October 2004.

The Zaruma Mineral Deposits are a 15 km long polymetallic epithermal vein system that lies north of the regional Pinas Fault. The vein system is hosted by Tertiary volcanics. A geological map of the Zaruma Project is shown in Figure 3.

The dominant veining in the Zaruma-Portovelo District strikes north, dips steeply to the west or east and is arranged in four main en-echelon sets controlled by NW striking faults parallel to the Pinas Fault (Figure 4). The vein's textures range from banded, massive to drossy quartz with some hydrothermal breccias (Figures 5 and 6).

The mineralized vein portions vary in width from 0.4 m to 2.0 m (average 1.2 m) and show a transition with chalcopyrite being the major sulphide in the west and sphalerite- and galena-dominant assemblages occurring in the east (Figures 7 and 8).

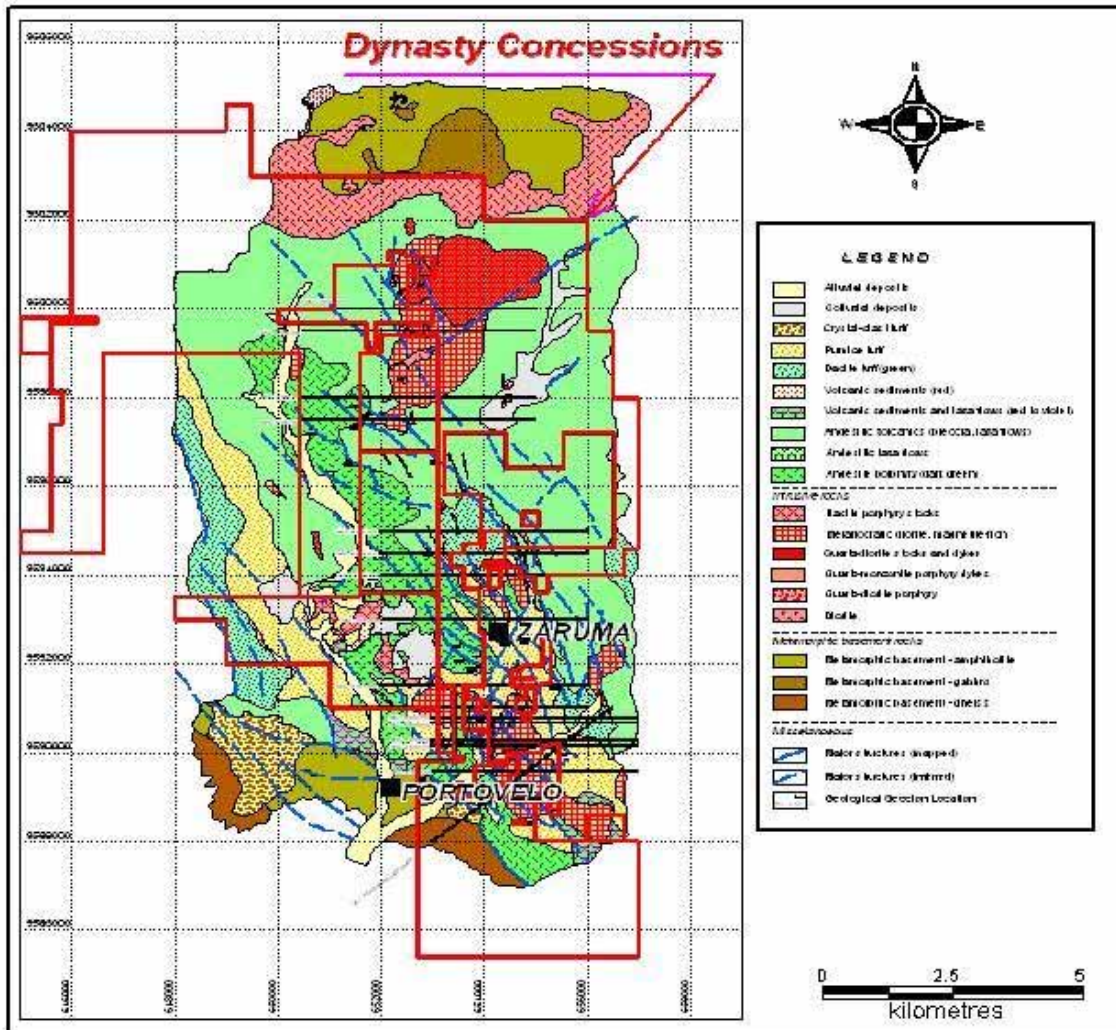


Figure 3
Zaruma Project Geological Map
 (After IAMGOLD and Kalinaj 2004)

Figure 4

Typical High-Grade Vein, Zaruma-Portovelo Mining District

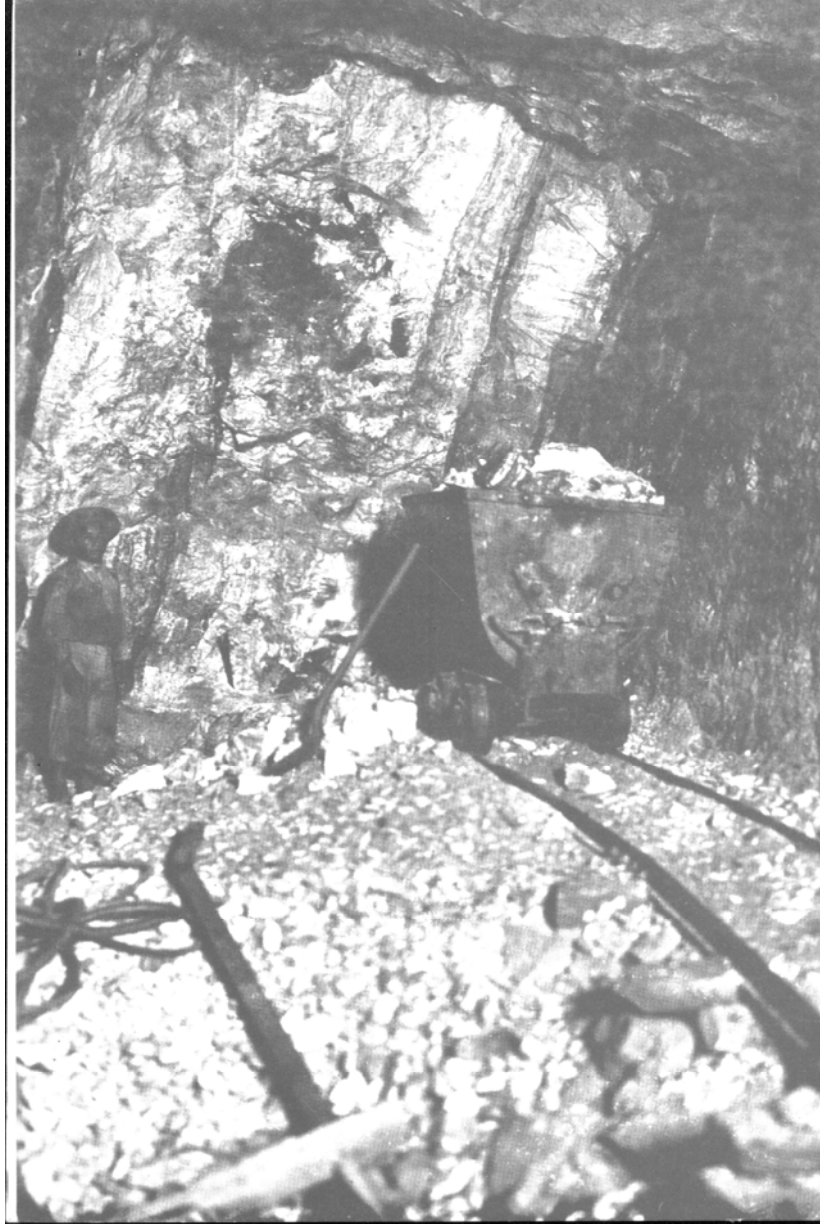


Figure 5. Banded Textures, Cristina Vein, Zaruma (after Kalinaj 2004)



Figure 6
Mineable Vein Width up to 6m, Jane Vein, Zaruma (after Kalinaj 2004)



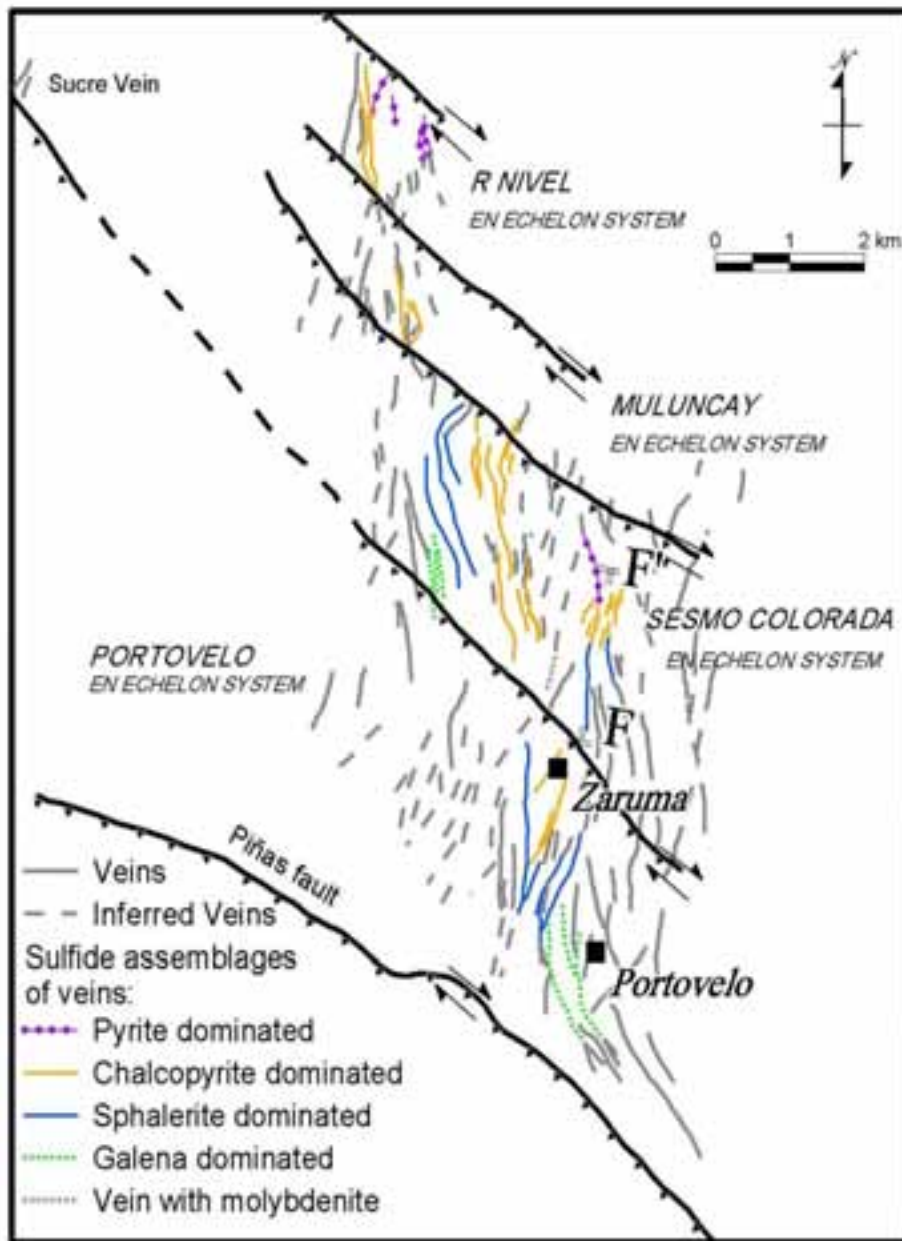


Figure. 7

Mineralisation Zonation in the Zaruma – Portovelo Mining District
 (after Spencer 2002)

7. DEPOSIT TYPES

Refer to previous report by Miroslav Kalinaj – Zaruma Project – Ecuador – Technical Report – 22 October 2004.

Refer previous Technical Report – Independent Geological Evaluation - by Allen J Maynard – Zaruma Project – El Oro Province – Ecuador - 21 October 2005

8. MINERALISATION

Refer to previous report by Miroslav Kalinaj – Zaruma Project – Ecuador – Technical Report – 22 October 2004.

9. EXPLORATION

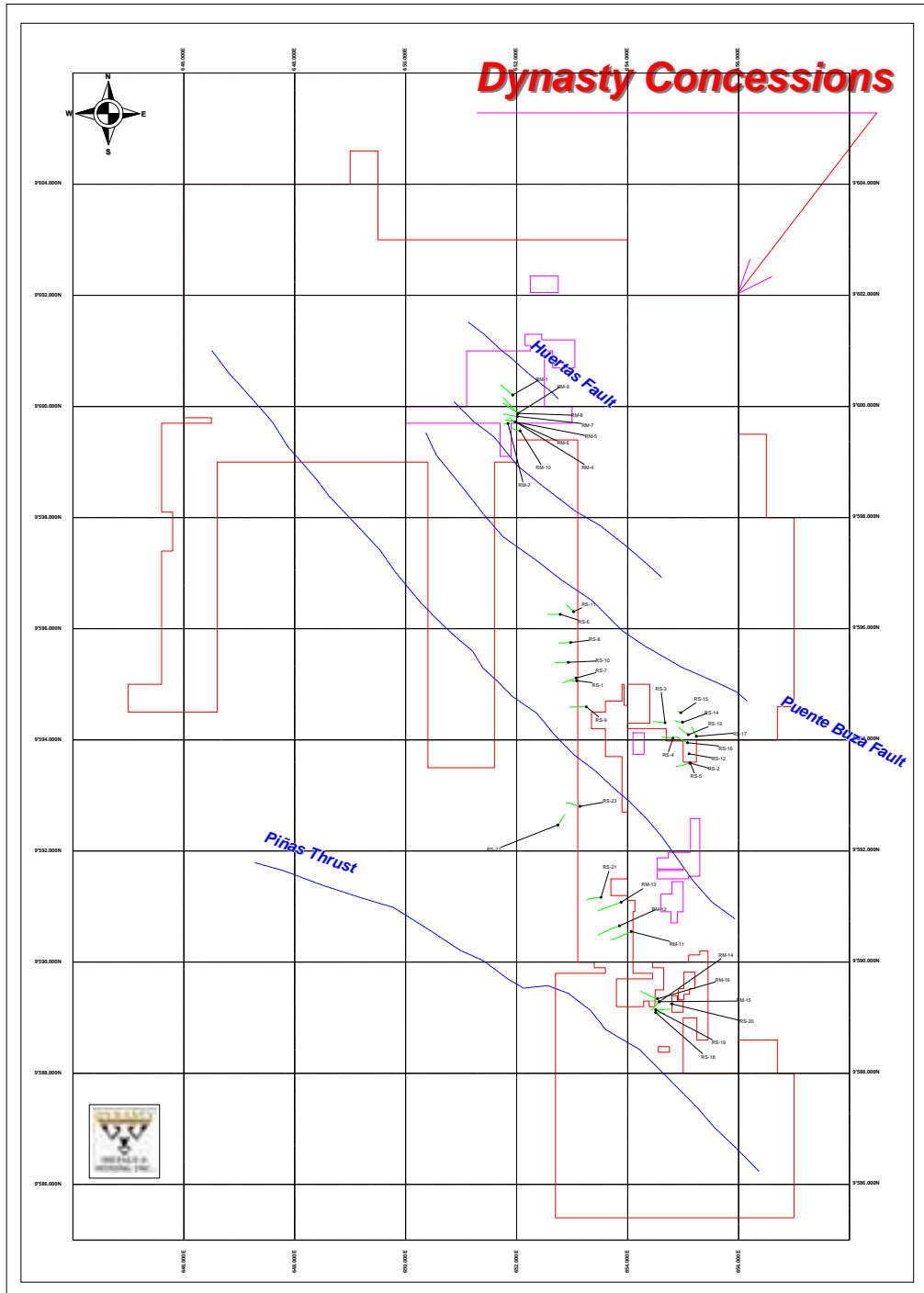
Systematic exploration activity closely related to mining advance was carried out by SADCO from 1897 to 1950, however, only limited information is available from that period. Detailed underground maps and **103,657** assay result records which have been rescued from local miners and from local archives by TVX Gold Corp. and IAMGOLD are now in the possession of Dynasty Metals and Mining Inc.

Modern exploration activity within the Zaruma – Portovelo Mining District begun in 1995 when a first attempt of property area consolidation and district-scale exploration was made by TVX Gold Corporation, a Canadian-based company. For over one year, a crew of more than 10 geologists, GIS and support staff studied the property. During this period, over 40km of underground workings were correctly surveyed and mapped on 1:500 scale. Valuable historic information, mostly SADCO's maps and assay results were rescued from local miners in this time. Total amount of samples which were collected by TVX is difficult to estimate, however, it is estimated that over 4,000 underground channel samples were taken based on daily reports of mapping geologists. Sampling databases submitted to Dynasty Metals and Minerals Corp. by IAMGOLD do contain **733** samples, however, several hundred sample locations and assay results were digitised from original maps by the Company's GIS staff.

Following TVX's withdrawal from Ecuador in 1998, all information was acquired by IAMGOLD which continued exploration including surface trenching, surface and underground sampling, surveying and diamond drilling. IAMGOLD significantly improved the Zaruma Project area legal consolidation, added valuable information to project databases and was the first company working within the area to employ geochemical data quality control and geological modelling. IAMGOLD databases contained:

680 surface rocks channel and chip samples
2,126 underground channel samples
5,415 soil samples

- 37 diamond drill hole results including sample assay results
- 1,114 DDH core samples
- 2,591 topographical control points survey
- 39 stream sediments samples
- 369 channel samples form surface trenching



IAMGOLD Drilling Programme and Zaruma Project Tenements

In August 2003, all the IAMGOLD properties and project databases were transferred to Dynasty Metals and Mining Inc which continued with exploration programmes up to date of this report. The Company had 3 geologists re-sampling selected IAMGOLD and TVX original sampling channels with the purpose of data verification and repeatability of the original assay results. New sampling programmes carried out by the Company in the zones of Sucre and Pacayurco mines resulted in the discovery of additional resources of high-grade mineralisation and were stated in the Company's Press Release on July 7, 2004 (Appendix D).

10. DRILLING

Whilst no diamond drilling has been undertaken by Dynasty, underground sampling of old workings took place in 2005 which work was reported by Allen J Maynard .

11. SAMPLING METHODS AND APPROACH

All the tunnels sampled were surveyed. Samples were collected across the backs (roofs) of the tunnels from 15cm wide by 10cm deep channels.(widths and depths of such samples are aproximate) Samples were differentiated according to mineral character, which determined sample lengths. Initially samples were collected at 6m spacings along the mineralised structures. Infill sampling later reduced the sample spacing to every two metres in some workings

No factors impacting a fair collection of samples are apparent from the data available within the project areas.

The quality of historical sampling provides a reasonable basis to calculate resource estimates and plan further investigations.

12 SAMPLE PREPARATION, ANALYSES AND SECURITY

Limited information about sample preparation, analyses and security is available from SADCO's times, however, details of registers from production and plant are confirming company's assay records in which the entire database totalling 103,657 assay results is in the possession of Dynasty Metals and Mining Inc. SADCO's on-site laboratory used a 3-acid digestion and gravity and/or fire-assay analysis for gold and silver determinations while base metal were determined by quantitative spectral assaying. The quality control data has not preserved and it is likely that SADCO did not use systematic analysis control.

TVX Gold Corp. sample databases were missing quality control samples, however, Mr Marislav Kalinaj, being one of the TVX Gold Corp. Zaruma project geologists, has confirmed that systematic procedures were controlled by standard and duplicate samples inserted with a frequency of 2 standards, 2 field duplicates and 2 laboratory duplicates samples per hundred samples sent for assay.

Samples from surface, underground and drilling core collected by IAMGOLD were bagged on site, sealed and sent to an external recognized laboratory (Chemex Labs) for assaying. Blanks and standards were routinely submitted with these samples with an interval of 1 standard per 20 samples, while blank insertion was random but not less than 2 blanks per 100 samples. The standard procedure included sample homogenization under -80# and -150#, Au and Ag content was determined by fire assay method from 50g pulps. For the multi-element analysis of 35 elements, Induced Coupled Plasma (ICP) and/or Neutron Activation (NAA) methods were employed. Procedures for these methods are known and descriptions can be found in the literature. A total of US\$ 887,929.31 was spent on laboratory costs by IAMGOLD.

Elements assayed by IAMGOLD and detection limits for the ICP method applied for the Zaruma Project sample analyses.

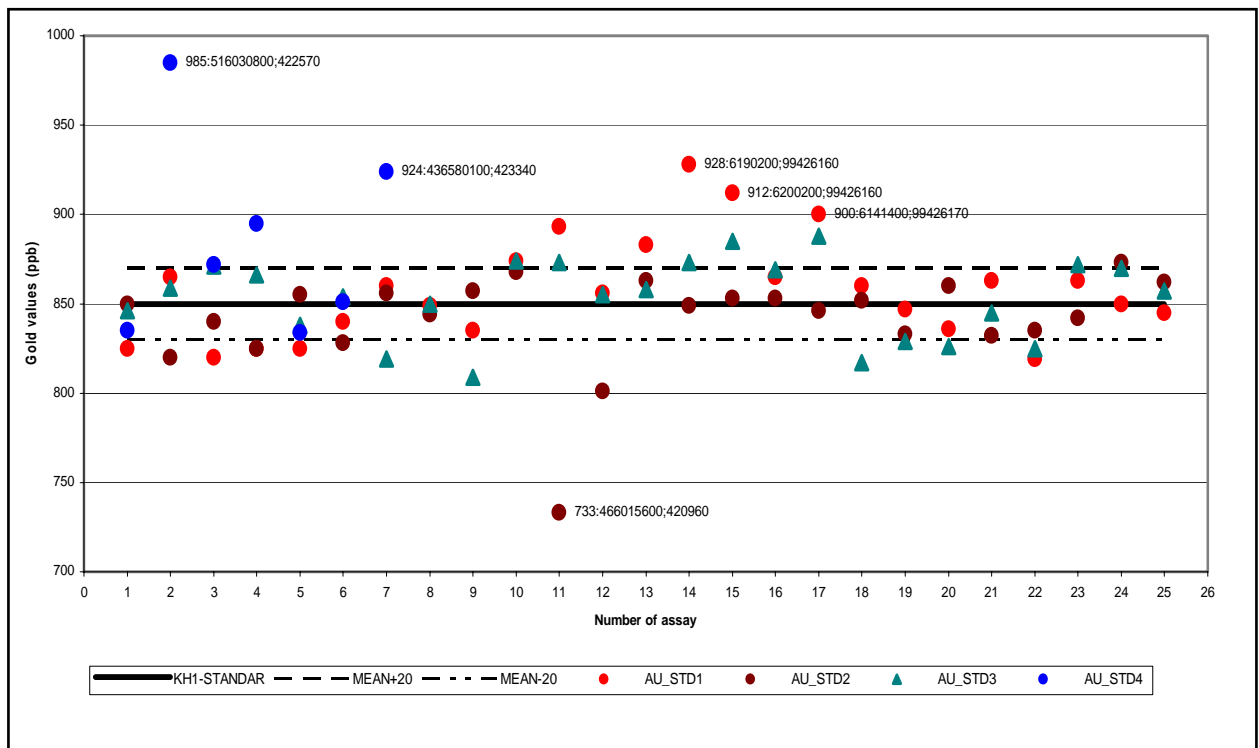
Element	Method	Units	Low limit	High Limit
Au50	FA-50	PPB	5	10000
Au Rew	1	PPB	5	10000
Au Rew	2	PPB	5	10000
Au Gra	v FA	PPM	0.17	999999
Au Wt	1 FA-AA	GM	0.01	999.99
Ag	ICP	PPM	0.2	200
Cu	ICP	PPM	1	10000
Pb	ICP	PPM	2	10000
Zn	ICP	PPM	1	10000
Mo	ICP	PPM	1	10000
Ni	ICP	PPM	1	20000
Co	ICP	PPM	1	20000
Cd	ICP	PPM	0.2	2000
Bi	ICP	PPM	5	2000
As	ICP	PPM	5	10000
Sb	ICP	PPM	5	2000
Hg	CV AA	PPM	0.01	50
Fe	ICP	PCT	0.01	10
Mn	ICP	PPM	1	20000
Te	ICP	PPM	10	2000
Ba	ICP	PPM	1	2000
Cr	ICP	PPM	1	20000
V	ICP	PPM	1	20000
Sn	ICP	PPM	20	2000
W	ICP	PPM	20	2000
La	ICP	PPM	1	2000

Al	ICP	PCT	0.01	10
Mg	ICP	PCT	0.01	10
Ca	ICP	PCT	0.01	10
Na	ICP	PCT	0.01	10
K	ICP	PCT	0.01	10
Sr	ICP	PPM	1	2000
Y	ICP	PPM	1	2000
Ga	ICP	PPM	2	10000
Li	ICP	PPM	1	20000
Nb	ICP	PPM	1	10000
Sc	ICP	PPM	5	2000
Ta	ICP	PPM	10	1000
Ti	ICP	PCT	0.01	5
Zr	ICP	PPM	1	5000

13. DATA VERIFICATION

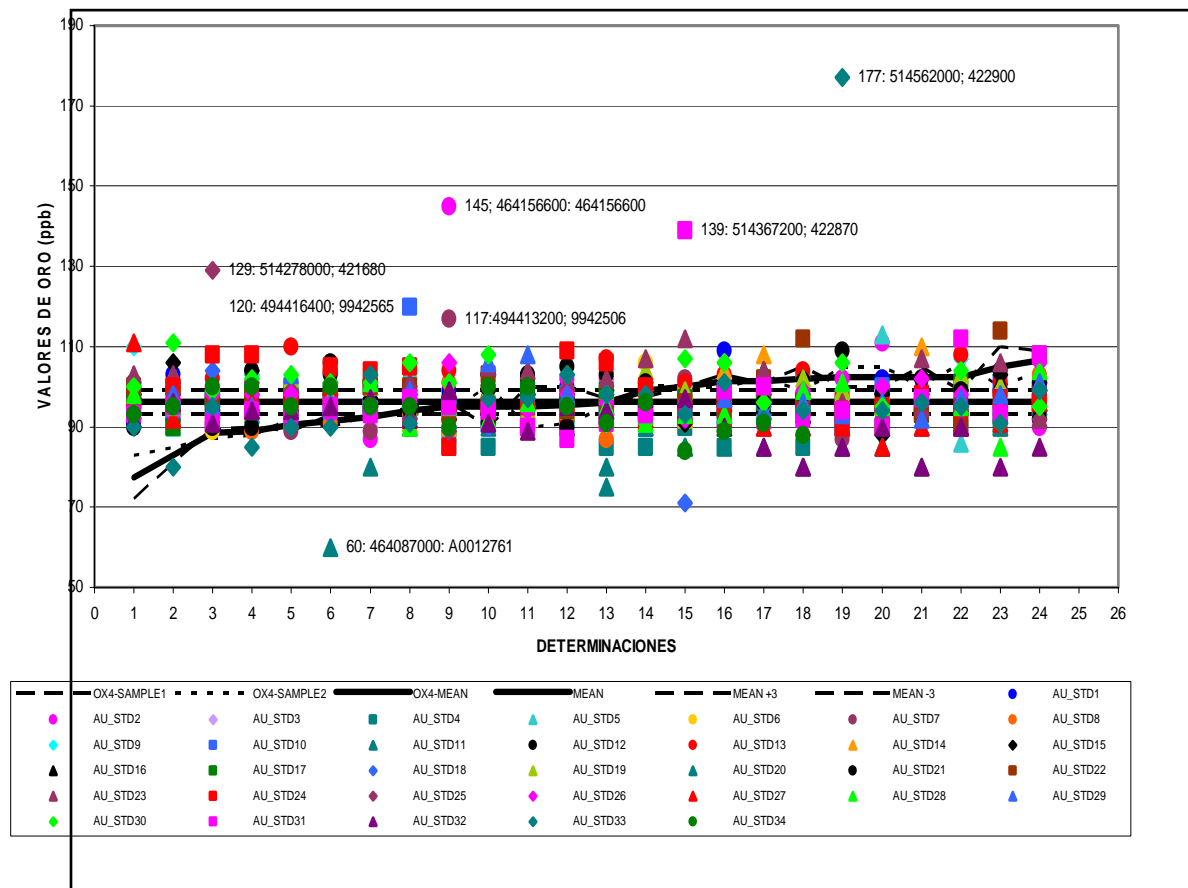
There is no data available on sampling and assay control in both the 103,657 SADCO's sample database or in the 733 samples from TVX Gold Corp. database. The Company's ongoing sampling programme within the Zaruma Project area included original channel re-sampling with the purpose of data verification and repeatability of the original assay results, in particular for high-grade samples.

Recent sample assay results reported by IAMGOLD do have an appropriate QA/QC quality control similar to that by the majority of mining companies. IAMGOLD used basically 3 standards and their behaviour was followed-up on a total of 17,448 samples. However, only 9,335 samples were from the Zaruma Project area. The frequency of 1 standard per 20 samples was established with random selection of different standards types, with a total of 213 standard samples being used. Blank samples were inserted randomly but not less than 2 blanks per 100 samples.



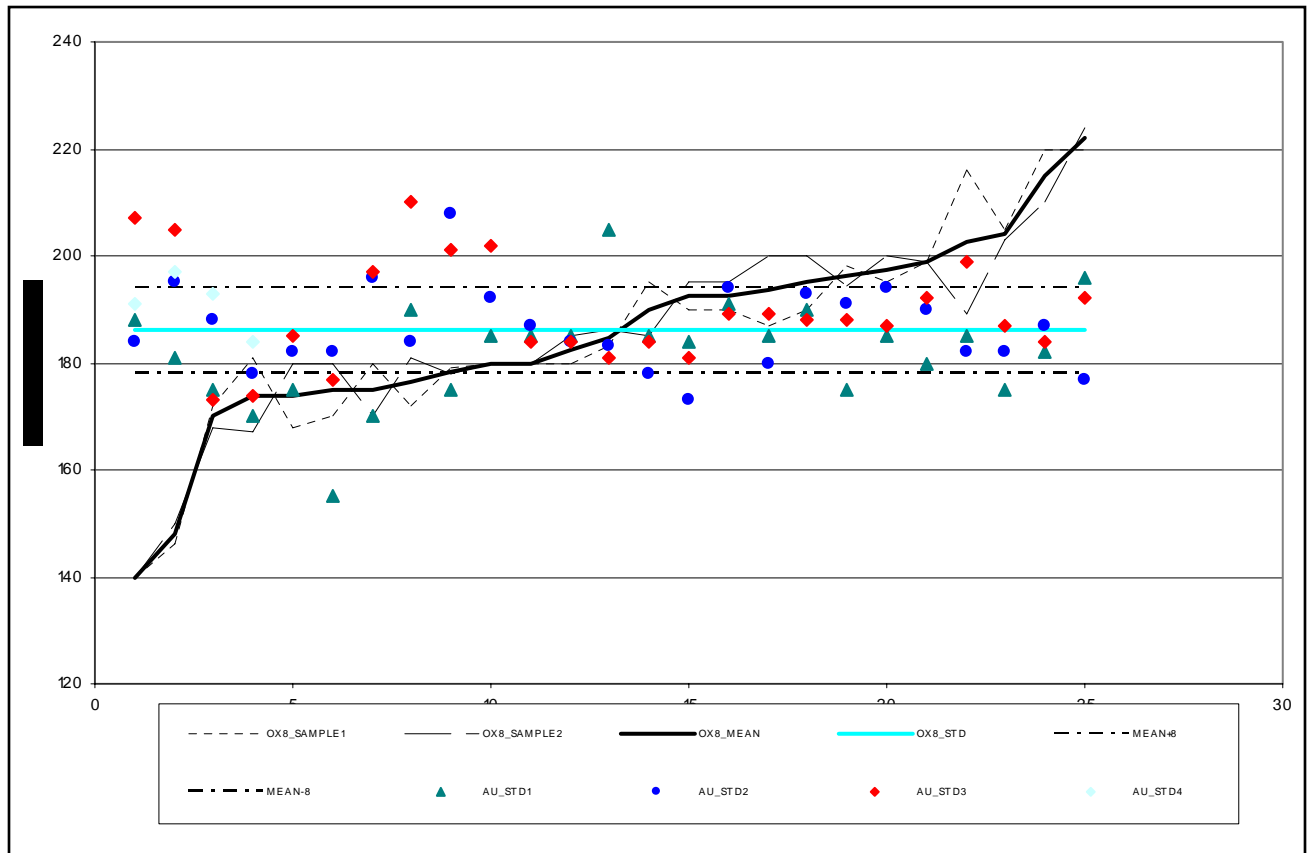
KH – 1 standard behaviour, IAMGOLD database

The behaviour of the standards show acceptable levels of dispersion with a stable performance for standard KH-1 with all results falling within the range of $\pm 15\%$ and are considered “good”. Standard OX-4 gave higher dispersion values reaching in sample Au_STD33 up to a 80% higher value than expected and in the case of sample Au_STD20 almost 60% less. Despite these 2 extremely out-of-range samples, the performance of standard OX-4 can be considered satisfactory. No relevant information is available regarding procedures used.



OX-4 standard behaviour, IAMGOLD database

with sample batches that contained the standards Au_STD33 and Au_STD20. The performance of standard OX-8 is considered “very good”, particularly in sample batches submitted to the laboratory in late 1999 and before June, 2000 when the QA/QC charts above were completed.



OX-8 standard behaviour, IAMGOLD database.

Original laboratory certificates for IAMGOLD and TVX are not among the material available for this report. Sources of data used for mineral resource calculations were spreadsheet files on four compact discs given by Dynasty Metals and Mining Inc. However, the fidelity of the data was confirmed by the second copy of the data obtained from the IAMGOLD office directly off the IAMGOLD GIS professional Glenda Mantilla. Files originated with TVX Gold Corp. date from April 1995 to March 1996. The IAMGOLD drill hole data contains complete results and was confirmed directly in the IAMGOLD offices in Quito. In the case of data from tunnel samples, data listings from all veins in the Zaruma-Portovelo District have been included, which are within the land tenements held and/or controlled by Dynasty Metals and Mining Inc.

14. ADJACENT PROPERTIES

Neither this report nor previous technical reports on the Zaruma Project have focused on adjacent properties. The authors understands that the adjacent properties have similar mineralisation and are generally owned by small mining operators and exploration companies. For details of tenure and access to Dynasty tenements the reader is directed to the Marislav Kalinaj Technical Report dated 22 October 2004.

15. MINERAL PROCESSING AND METALLURGICAL TESTING

WJ Holly, as co-author of this Preliminary Assessment has relied upon the plant design and costs provided by engineer KC Dodd and information contained in this section has been determined from that .

It has been assumed that the Zaruma Plant will be established on the existing treatment plant site.

A number of points arise which show areas where costs may vary. However, a considerable amount of work has been done on this subject that has shown-

- (i) That in view of the client being prepared to acquire and use suitable second hand equipment it has been possible to locate plant items at low cost.
- (ii) Labour costs are low compared to Australia
- (iii) Transport costs from port sites are expected to be more expensive than in Australia due to distance and mountainous conditions.
- (iv) The Zaruma ore has a high work index and abrasion index. This affected direct operating costs estimated.
- (v) Since study work started it appears that the single 250,000tpa plant being defined may well be suitable for establishment at Zaruma and if it is decided to move to a 500,000tpa operation a second 250,000tpa plant can be built as a mirror image of the first.
- (vi) The rough assessment of costs has been based on Australian experience and may require adjustment on making better definition of local cost factors.
- (vii) There is clearly a need for better definition of the metallurgical processes before finalising plant selection and design.
- (viii) The infrastructure requirements and costs are yet to be estimated to cover –
 - (a) Power supply (It is proposed to buy power if possible).
 - (b) Administration offices.
 - (c) Workshop – store
 - (d) Assay office and facilities.
 - (e) Living facilities for staff and employees
 - (f) Water supply.
- (ix) There are a number of characteristics to Zaruma ore that require a better understanding and how to handle the ore. It would be ideal to be able to set up a trial operation to spell out the facts about mining and ore treatment. If this can be done it could well eliminate unnecessary risk factors.

Capital Outlay.

- (a) If a 250,000tpa operation is established a capital cost of the order of US\$15,000,000 is expected plus the cost of infrastructure items of say \$2,000,000 or thereabouts.
- (b) If the initial plant is duplicated the additional capital outgoing is expected to be of the order of \$16-17,000,000. These capital costs are set out as targets to be achieved and should be sufficient for preliminary cost assessments.

Operating Costs.

Allowing for hard ore with a work index of 19 it is suggested that amortization and direct operating costs for ore treatment be allowed at US\$14 per tonne.

Metallurgical Testwork

At the time of preparation of this report KC Dodd were undertaking testwork on a sample of Zaruma ore. Notwithstanding, the Zaruma ore has a long history of treatment by others on the field.

16. MINERAL RESOURCE AND MINERAL RESERVE ESTIMATES

Based on the results from geological investigations, Zaruma resource estimates were completed by Al Maynard & Associates who are Independent Qualified Persons as defined by National Instrument 43-101 (see report by Allen J Maynard BAppSc MAIG M AusIMM dated 21st October 2005). Mr Maynard is a co-author of this Preliminary Assessment report providing verification of the resource.

The resource was estimated by reference to underground mine development and assay plans available from the period prior to 1950 when the South American Development Company operated the field. Further investigation was carried out by way of underground sampling of lodes above the water table, and some diamond drilling by previous owners of the tenements TVX Corporation and IAMGOLD. Dynasty has also undertaken some underground sampling. The water table is at a level such as to allow top access to some veins.

Further feasibility work will be required to determine the extent to which the estimate of mineral resources and mineral reserves may be materially affected by environmental, permitting, legal, title, taxation, socio-economic, marketing, political and other relevant issues.

	CATEGORY	TONNES	Au oz/t	Au g/t	Au ozs
(rounded)	Measured Resource	1,568,000	0.45	13.93	702,100
TOTALS	Indicated Resource	915,000	0.45	13.87	408,100
	Inferred Resource	3,382,000	0.41	12.72	1,383,400

Table 1: Total Mineral Resources in the Zaruma Gold Project

Resources not Reserves (43-101 section 3.4(e) statement requirement)

Readers are cautioned that Mineral Resources that are not Mineral Reserves do not have demonstrated economic viability.

No Mineral Reserves have as yet been estimated for the Zaruma property. These would be estimated at the completion of a feasibility study.

16.1 Mine Planning

A detailed mine plan of the Zaruma Project has been prepared by Brian Speechly FAIMM. Mr. Speechly is a specialist in mine planning and has over 40 years experience

in the mining industry. He has worked on many international mining operations and is a Qualified Person under NI 43-101 but is not Independent. The Consultant, WJ Holly, has reviewed and endorses the extensive mine plans with Brian Speechly. They show the proposed development in relation to old SADC development. Long sections of veins depict the resources to be mined in relation to previously mined areas.

16.1.1 Planning Method and Mining History

The mine planning has involved drawing of detailed development plans or slices at approximately 15 vertical intervals to ensure satisfactory mining access to all known resource veins on the Dynasty concessions. The planning work has been done in relation to old development plans and long sections of the ore bodies. This data has been secured from old mine records, particularly from the South American Development Company (SADCO) who were the last mining company to operate the Zaruma-Portovelo field in a major way.

16.1.2 South American Development Company

The South American Development Company (SADCO) was a significant US corporation which operated mines in the Zaruma-Portovelo field for 46 years from 1904 to 1950. During this time approximately 3.6 million ounces of gold and 12 million ounces of silver were produced. The company operated vertical shafts with narrow tracked underground trucks and locomotives transporting ore from shrink stopes. Production rates at the mine are estimated up to a maximum of 150,000 to 200,000 tonnes per year, and gold grades were approximately 20-30 grams per tonne. Significant quantities of silver, lead and zinc were also produced as by-products. The company operated a relatively sophisticated treatment plant which used a gravity circuit and Merrill Crowe system to recover gold and silver. Flotation was used to produce a concentrate which was sold to smelters to recover the lead and copper and some additional gold and silver. Current metallurgical designs by Keith Dodd consider this metallurgical route as one possible option.

16.1.3 Old Mining Operations – SADCO

Evidence of the old mining operations of the South American Development Company still exists at Portovelo. Operations were centred on a shaft, known as the American shaft, which was collared 30 meters above the Amarillo River which flows in the valley through the centre of the town. The shaft was used to exploit the known Portovelo and Abundancia Veins.

Waste from the shaft was side tipped on an East-West dump, and a treatment plant constructed on the dump.

Initially gold was the only metal recovered, however a flotation circuit was later introduced to produce a lead copper concentrate.

Tailings were pumped and laundered to large areas on the river flats.

Buildings and the soccer oval in the present town of Portovelo are now situated on top of the old mineralised waste and tailings dumps.

Materials from earlier mining may have washed down the Amarillo River.

Remnants of the old treatment plant still exist at the site but have been undermined by small miners.

16.1.4 1940 Production Records

SADCO production records for 1940 show 168,000 tonnes were treated for 52034 ounces of gold and 82,127 ozs of silver by Merrill Crowe process. 14836 tonnes of lead concentrate were also produced with minor copper, gold and silver.

SADCO operated during the years when the price of gold was controlled at US\$35/ounce. Notwithstanding, the company was profitable because of the high grades of ore available for mining. The old SADCO mine development and stoping plans show ore blocks which have been developed, sampled, and assayed but were not yet mined. It should be appreciated that SADCO operated during a time when exploration was undertaken by underground development rather than by diamond drilling.

16.1.5 Operations after SADCO – (post 1950)

It is understood that SADCO's mining concession was not renewed in 1950 and the company withdrew from the field. The Ecuadorian Government formed a company Anonima Mineral Industrial Ecuatoria (CAMINE) to mine the Zaruma deposits and in 1951 changed the name to Compañía Industrial Minera Asociada (CIMA). The company was reputedly owned by local authorities and the people of Zaruma and Portovelo. The company was unable to develop and maintain major operations and mined only 0.38 million ounces from 1950 to 1965 when the company ceased operations. Since that time only minor operations have been undertaken by small operators concentrating on near surface deposits.

The history of the Zaruma mining operations indicates that there is a significant opportunity to apply modern mining methods to a major resource which has had only limited exploitation in the past. Dynasty's concessions cover much of the old SADCO operations which extended to a depth of only approximately 200m below the town of Portovelo, thus indicating significant additional potential at depth from the concessions in the future.

16.1.6 IAMGOLD and Dynasty

In 1999 IAMGOLD explored the Zaruma concessions by confirmatory underground sampling, and diamond drilling. In 2003 the concessions were transferred to Dynasty Metals and Mining for a 3% royalty consideration. The resources currently identified by Dynasty are based on the historical SADCO underground data and IAMGOLD

confirmatory sampling and drilling. Notwithstanding it should be appreciated that the current Dynasty resources have not yet been the subject of exhaustive mining investigation.

The consultant, WJ Holly, has reviewed the extensive mining plans with Brian Speechly. They show the proposed development in relation to old SADCO development. Long sections of veins define the resources to be mined in relation to previously mined areas.

16.2 Deeper Mining Potential for Zaruma

Mining at Zaruma has historically been limited to approximately 200 metres below the level of the Amarillo River which runs through the centre of the valley in the town of Portovelo. Small miners have been active up to approximately 300 metres above the Amarillo River. The current Mineral Resources of Dynasty are contained within this 500m vertical range.

Below the maximum depth of mining (ie approx 200m below Amarillo River), is virgin ground which has yet to be explored. Given the shallow depth and high grade production of historic mining, and the extensive nature of the vein system (14km long), the depth potential of the Dynasty concessions would appear to be substantial. Exploration drilling and development is recommended. There is no evidence to suggest that any deterioration of the ore body (grade or tonnage) with depth has occurred to current development depth limits.

Given favourable ore values modern underground mining techniques are able to develop to depths of several thousand metres and beyond.

The limited technology of pre 1950 mining techniques is in evidence at the mine. Single skip and non counterweighted hoisting, plus limited pumping capacity, probably dictated the depth of the Zaruma mine. Notwithstanding the miners were able to find and mine high grade ore on their limited working horizons, and thus did not have a need to mine deeper. Modern development and mining techniques will facilitate further mining at depth.

Diamond drilling was seldom used in old mining operations. Resources were generally explored by exploration development only.

All veins at Zaruma could continue at depth and mining through virgin country will be much simpler compared with development through the old developed areas.

All the above factors suggest considerable depth potential for the Zaruma field.

16.3 Exploration Potential -

On-going exploration by the Company has demonstrated good potential for the strike extension of known vein systems and locating new mineralized veining.

Of the 27 principal veins at Zaruma – Portovelo, the Company has initially conducted exploration on three under-explored target areas – Sucre, Pacayurco and Tamayo. Sampling and mapping by Dynasty indicates that most veins have strike and down dip extensions. A total of 56 underground channel samples were taken from the Sucre Vein over widths ranging from 0.02 metres to 2.1 metres. Assay results ranged from 0.01 g/t to 55.62 g/t gold and 0.8 g/t to 278 g/t silver.

The strike length of Sucre has increased by 400 metres with these results and depth of vein was increased by 90 metres.

In all, 36 underground channel samples from the quartz-sulphide Pacayurco Vein were also taken. Assay values ranged from 0.02 g/t to 99.57 g/t gold and 0.3 g/t to 62 g/t silver. Sample widths vary from 0.3 to 2.4 metres. Strike length was increased by 800 metres and down dip was extended by 36 metres.

Good potential for new vein system discoveries on Dynasty's concessions occur in six large sectors of the Zaruma – Portovelo Mining District. These six sectors show evidence of mineralization by the occurrence of strong, widespread gold soil anomalies which warrant follow-up mapping, trenching and drilling.

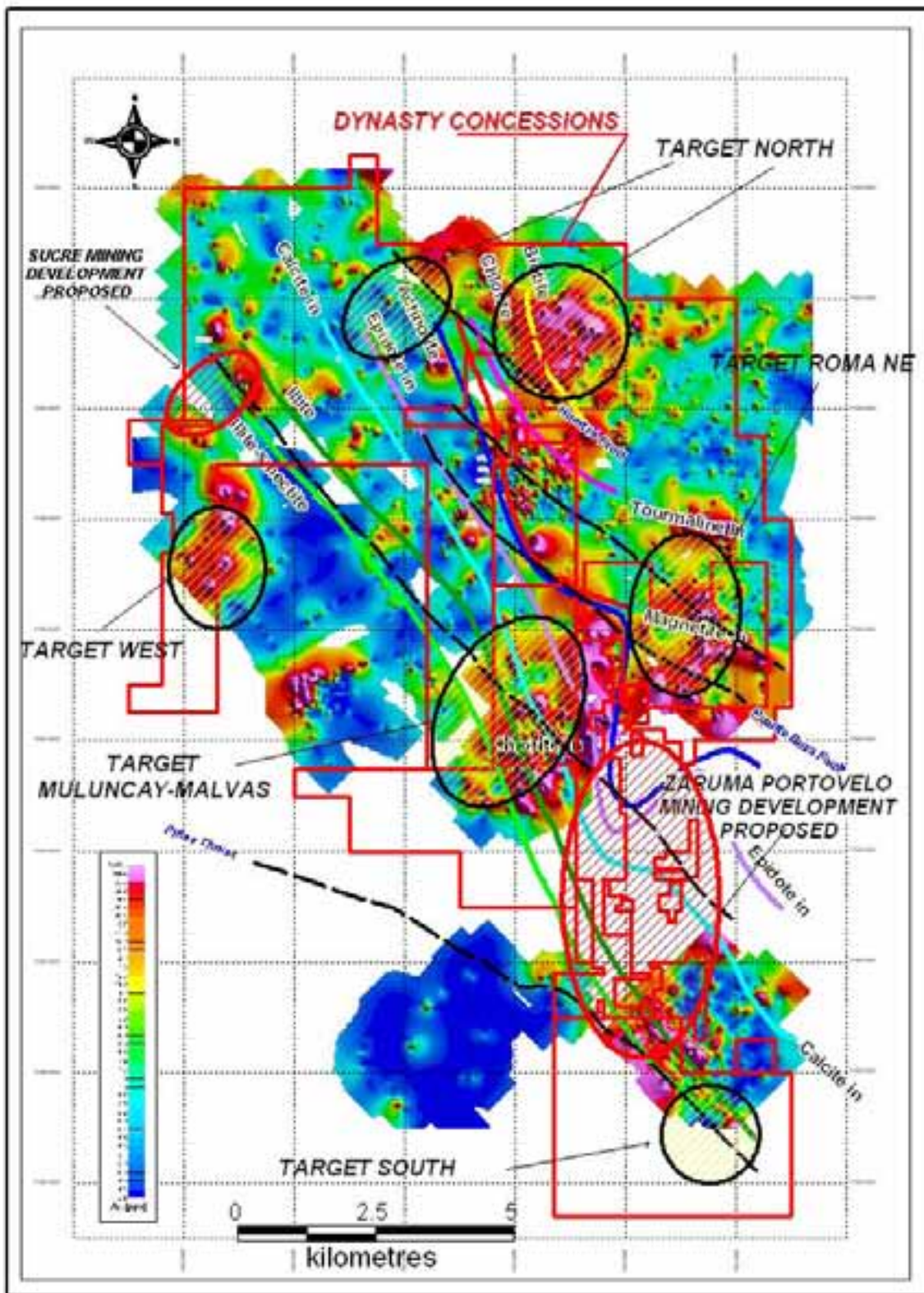


Figure 8 – Soil Geochemical Gold Anomaly Map of Zaruma Project Showing Major Exploration Target Areas

16.4 Preliminary Assessment – Economic Evaluation of Mineral Resources

This Preliminary Assessment gives an initial evaluation of the possible economics of the Zaruma Project in two stages. Stage 1 considers the ore resources which are incorporated within the mining plans prepared by Brian Speechly. These are predominantly the Measured and Indicated Resources quoted in the Table 1 above.

In addition to the Stage 1 resources approximately 50% of the ore contained in the Inferred Resource category in Table 1 is also expected to become profitable ore. The possible economics of this second stage are considered in Stage 2. This estimate has been made by Brian Speechly (Dynasty Technical Director) and Greg Whitfield (Dynasty Exploration Manager) and is endorsed by the Consultant W J Holly.

16.4.1 Stage 1 – Measured and Indicated Resources

Mine planning by Brian Speechly has encompassed the following Mineral Resources:

CATEGORY	TONNES	Au oz/t	Au g/t	Au ozs
Measured Resource	1,568,000	0.45	14.15	713,207
Indicated Resource	825,700	0.43	13.52	358,816
Total	2,393,700	0.45	13.93	1,072,023

Table 2
Measured and Indicated Resources – Included in Mine Plans

The resources do not include silver, copper, and lead values because the old SADCO underground sampling and assay data did not include these values. Whilst these metals were recovered by the production of a lead concentrate (following Merrill Crowe) their values were small compared to the value of gold. Underground sampling by IAMGOLD in the veins above the water table also confirmed that the value of these metals was low. Ministry of Mines Production records for SADCO in 1940 were as follows:

SADCO – Production Records - 1940		
Metal	Quantity Produced	Units
Gold	52,846	ounces
Silver	121,628	ounces
Copper	25,258	lbs
Lead	501,130	lbs

Table 3
SADCO Production Records 1940

SADCO received \$35/oz for the gold and \$0.35/oz for the silver. The value of the gold was 95% of the total value of production.

At the planned production rate of 250,000 tpy Stage 1 has a mine life of 10.5 years

The low grade of the base metals in the Zaruma ore body could allow the use of CIP technology in the treatment plant. Testwork is recommended. Independent engineer and plant constructor Keith Dodd is considering CIP technology along with other treatment methods.

16.4.2 Stage 2 – Inferred Resources

In addition to the ore included in mine plans (Stage 1) approximately 50% of the current Inferred Resources are anticipated to become profitable ore.

CATEGORY	TONNES	Au oz/t	Au g/t	Au ozs
50 % of Inferred resources	1,691,000	0.41	12.72	691,600

**Table 4
Preliminary Assessment - 50% of Inferred Resources**

At 250,000 tpy Stage 2 resources represent a mine life of 6.75 years

Future exploration and development drilling for the upgrading of resources by extensions to the known veins at depth and along strike are anticipated to add significantly to the ore resources.

16.5 Mining Method

16.5.1 Underground Mine

An uphole bench retreat narrow vein mining method is proposed for the Zaruma – Portovelo Project. The method is recommended as it provides maximum productivity with minimum dilution. The level interval is 15m with 3.5m high drill drives. The method is well described in the attached drawing “Typical Longitudinal Projection Showing Uphole Benching - Narrow Vein Mining” (B Speechly). The mine design is sound and as such is recommended, particularly in view of the vertical nature of the ore bodies and the strong competent nature of the wall rocks, which are volcanic andesites and welded tuffs.

It will be important to operate as many headings and stopes as is reasonably possible to guarantee the 250,000 tpa production to the plant.

The type of equipment proposed (see attached) involves 1m wide Tamrock Microscoop loaders, Tamrock Quasar 1F jumbos, and Volvo 25t trucks. This selection of equipment is ideal for the minimum width mining operations envisaged. Dynasty should be advised to enter maintenance and repair contracts with the equipment suppliers to guarantee availability, personnel training, and thus productivity.

Underground mining will be undertaken by Dynasty from 4 metre by 4 metre declines on 1 in 7 gradients, with their portals located strategically above the relevant resource.

16.5.2 Mine Plan for Zaruma Project – B Speechly – 2006

Participation in the Jerusalem and Zaruma Project commenced in June 2005 and has been progressively designed and evaluated to the present date.

Geologists and a mining engineer under the direction of Dynasty Technical Director produced cross sections, longitudinal sections and fifteen meter vertical spaced slice plans which showed all mineralized narrow ore veins.

The work undertaken by Mr Speechly and staff is endorsed by the author (WJ Holly) as representing a sound depiction of the mining proposed.

Mine Design Parameters

Mining equipment proposed includes narrow vein development drills and blast hole drilling Jumbos (using electric hydraulic drills) which allow mining to be undertaken in drives down to 1.2 metres wide.

Load Haul dump bogging machines are proposed which can work in narrow drives down to 1.05 metres wide.

Road train type haulage trucks have been selected that can haul 25 to 30 tonne and fit into a 4¹/₂ meters by 4 meter wide haulage drive or decline. They are only 2.6 meters wide, can carry a payload of 50 tonne up a 1 in 7 incline, and can transport the payload direct to the treatment plant. These road trains have two motors, one in the prime mover and the second in a trailer. The second motor is turned off for surface haulage. Direct transport from underground to the treatment plant will eliminate re-handling costs at the portal. Competitive local trucking contractors are also available to ensure efficient low cost ore transport from declines to the treatment plant.

Five declines have been designed to for mining all lodes in the Dynasty leases at Zaruma.

Detailed inspection of the Zaruma site was undertaken during February 2006 by co-author and Consulting Mining Engineer W Holly and Technical Director B Speechly.

16.6 Capital and Operating Costs

16.6.1 Capital

K C Dodd has estimated the capital costs for the infrastructure and treatment plant construction and development at US\$17 million

Additionally a further US\$8m of development capital has been allowed for site preparation and mine development which work could extend over one to two years

16.6.2 Operating Costs

Operating costs for this Preliminary Assessment have been broadly estimated and are based primarily on the local experience of Dynasty Metals and Mining Inc, other operators in the Zaruma field, and from operating cost experience in underground mines in neighbouring Peru. In its development the Zaruma operation will be able to rely on the relatively low cost environment which exists in Ecuador and Peru. Underground mining culture is strong in these areas and should adapt well to the introduction of modern mining techniques and equipment at Zaruma. Treatment costs have been estimated in relation to KC Dodd experience.

16.7 Basic Economics of Operation

16.7.1 Stage 1 Evaluation – Measured and Indicated Resources

As indicated above it is anticipated that Zaruma will be mined by an underground mining method. Resources (Measured and Indicated) as estimated by co-author and Consultant Geologist AJ Maynard and contained within the planned underground mine are:

CATEGORY	TONNES	Au oz/t	Au g/t	Au ozs
Measured Resource	1,568,000	0.45	14.15	713,207
Indicated Resource	825,700	0.43	13.52	358,816
Total	2,393,700	0.45	13.93	1,072,023

Table 2
Measured and Indicated Resources – Included in Mine Plans

The basic economics of the underground mine are estimated in the table below. It has been assumed that 15% dilution of the ore at zero grade will be incurred during mining. This will necessitate an additional 15% of mining, treatment and administration costs.

Resources not Reserves (43-101 section 3.4(e) statement requirement)

Readers are cautioned that Mineral Resources that are not Mineral Reserves do not have demonstrated economic viability.

Table 5
Basic Economics of Zaruma Underground Resource

Stage 1 – Measured & Indicated Resources	
Revenue USD	
Ore Tonnage	2,393,700
Grade Gold (g/t)	13.93
Ounces Gold in Ore	1,072,023
Recovery % Au	87
Ounces Gold Recovered	932,660
Pre Royalty Revenue @ USD500/oz	466,330,000
Royalty 3%	13,990,000
Post Royalty Revenue	452,340,000 USD
Estimated Operating Costs USD	
Mining @ USD35/t ore + 15% for dilution	96,347,000 USD
Treatment @ USD14/t ore + 15% for dilution	38,539,000 USD
Administration @ USD10/t ore + 15% for dilutn	27,528,000 USD
Total Estimated Costs	162,414,000 USD
OPERATING SURPLUS –U/ground	290 million USD
Operating Cost per Ounce Gold	174 USD / oz

The underground mine would produce at the rated capacity of 250,000 tpy and all expenditure should be paid back within the first years of production. The IRR is 115.95%

16.7.2 Stage 2 Evaluation – Inferred Resources

The Preliminary Assessment economic evaluation as described above is based on mine plans which have been constructed in detail by Dynasty Technical Director Mr B Speechly. Mr Speechly estimates that in addition to the measured and indicated resources considered, an additional 50% of Inferred Resources (see Table 4 below) will become reserves as underground mine development proceeds. Mr Speechly is a Qualified Person in accordance with NI 43-101. In accordance with NI 43-101 Part 2.3 (3) this proportion of the Inferred Resources are hereby included as a part of this Preliminary Assessment (Table 6). This estimate of 50% is endorsed by Consultant W J Holly.

Preliminary Assessment and Inferred Resource

In respect of this Inferred Resource and its inclusion in this economic evaluation (NI43-101 Part 2.3.3), it should be appreciated that this Preliminary Assessment is preliminary in nature, it includes Inferred Mineral Resources that are considered too speculative geologically to have economic considerations applied to them that would enable them to be categorised as Mineral Reserves. As such there is no certainty that the Preliminary Assessment will be realised.

.Table 4 – 50% of Inferred Resources

CATEGORY	TONNES	Au oz/t	Au g/t	Au ozs
50 % of Inferred resources	1,691,000	0.41	12.72	691,600

Table 6 - Possible Economics of Inferred Resources

Stage 2 – 50 % of Inferred Resource	
Revenue USD	
Ore Tonnage – undiluted	1,691,000
Estimated Rate of Mining	250,000 t.p.a.
Grade Gold (g/t)	12.72
Ounces Gold in Ore	691,547
Recovery % Au	87
Ounces Gold Recovered	601,645
Pre Royalty Revenue @ USD500/oz	300,822,000 USD
Royalty 3%	9,025,000 USD
Post Royalty Revenue	291,797,000 USD
Estimated Underground Costs USD	
Mining @ USD35/t ore – diluted 15%	68,063,000 USD
Treatment @ USD14/t ore – diluted 15%	27,225,000 USD
Administration @ USD10/t ore – diluted 15%	19,447,000 USD
Total Estimated Costs	114,735,000 USD
OPERATING SURPLUS –	177 million USD (from Inferred Resource)
Equivalent Cost per Ounce Gold	191 USD / oz

17. OTHER RELEVANT DATA AND INFORMATION

The author has endeavoured to include all relevant information necessary to make the report understandable and not misleading. The primary objective of the report is to provide a Preliminary Assessment of the economic potential of the resources which have been previously reported. It is emphasised that this report is not a pre-feasibility study nor is it a feasibility study as defined by NI 43-101 (Part 1.2).

17.1 Environmental

An environmental impact study is in progress with close contact being maintained with government authorities. Declines, waste dumps and tailings will have an impact on the environment and re-vegetation plans will be implemented once mining and ore treatment has ceased.

Dynasty already has the rights to land upon which it is planned to construct the treatment plant and a tailings dam. Other sites are also being considered for the tailings dam. Whilst the general area of the Zaruma – Portovelo region is steep it would appear from preliminary investigation that there is sufficient area in the valleys to accommodate all proposed developments.

The proposed underground development from declines will have a minor effect on the Zaruma and Portovelo town area. Whilst there will be environmental impacts on the towns it is anticipated that these will generally be positive. Currently small operators are engaged in very basic mining activities across the field. It is anticipated that Dynasty's proposed mines will offer significant employment to local miners and generally enhance employment and living conditions.

Transport of ore from decline portals via local bitumen road systems to the treatment plant site will utilise the current trucking systems which are prevalent in the town.

Overall approximately 1000 small miners are employed on various properties in the vicinity of the Zaruma Project.

18. INTERPRETATIONS AND CONCLUSIONS

The principal conclusions from the author's assessment are as follows:

Scale of Operations

The Company plans to construct a mill capable of processing 250,000 tonnes of ore per year with plans to process 2,393,700 tonnes of Measured and Indicated ore over the initial life of the mine, which is approximately 10.5 years. The proposed annual rate of production is optimum when the nature of the ore body is considered. The mineralization is primarily hosted in a series of narrow (1.2m wide) veins, which are rich in gold and silver.

Preliminary estimates of capital requirements are anticipated to be relatively low at US\$25 million. This includes US\$8,000,000 for site preparation and mine development, and US\$17,000,000 for the mill, treatment plant and infrastructure.

Processing Alternatives

For the purpose of this assessment, the author has based his assessment on recommendations by Consulting Engineer KC Dodd for a flotation concentrator together with a Merrill Crow or CIP plant.

Resource Base

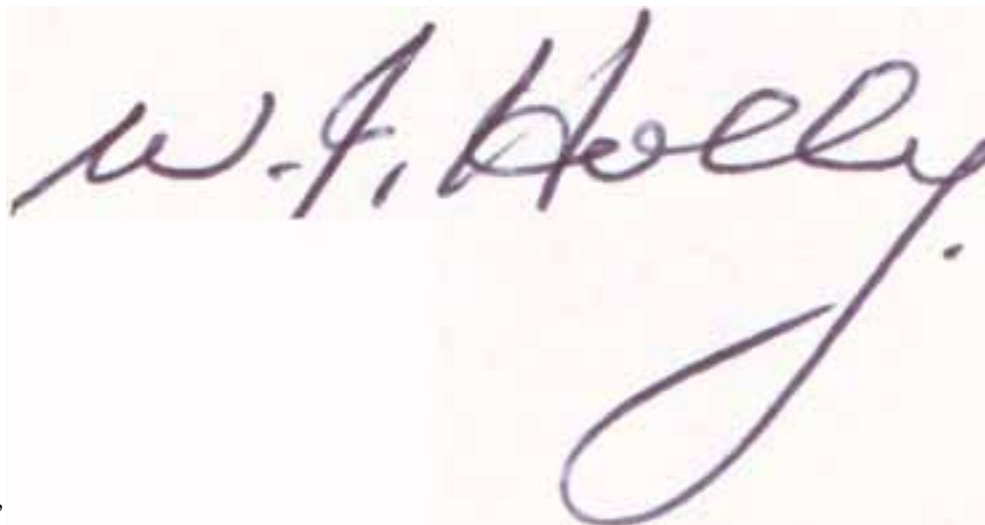
In his Technical Reports dated October 21, 2005, Allen J. Maynard BappSc, MAIG, MAusIMM estimated resources as follows:

	CATEGORY	TONNES	Au oz/t	Au g/t	Au ozs
(rounded) TOTALS	Measured Resource	1,568,000	0.45	13.93	702,100
	Indicated Resource	915,000	0.45	13.87	408,100
	Inferred Resource	3,382,000	0.41	12.72	1,383,400

Table 1 : Total Mineral Resources at Zaruma Gold Project

The Company has developed an initial (Stage 1) mine plan (over approximately 10.5 years) in which 2,393,700 tonnes of ore from its Measured and Indicated Resources are processed.

The Company has estimated that the life of the mine could be extended by approximately 6.75 years if it can successfully convert 50% of the



Company's
Inferred Resources into Measured and Indicated Resources after additional development and exploration work is completed.

As required by National Instrument 43-101, it should be noted that these evaluations are preliminary in nature and that the Inferred Resources in particular are considered too speculative geologically to have economic considerations applied to them that would enable them to be categorized as Mineral Reserves. As such there is no certainty that the Preliminary Assessment will be realized.

Economic Assessment

Stage 1 – predominantly Measured and Indicated Resources

The author's analysis indicates that the Zaruma Gold Project has sufficient Measured and Indicated resources to support a 10.5 year mine plan that would generate the following pre-tax cash flows from operations less mining development and site preparation costs of US\$8 million and treatment plant and infrastructure costs of \$17m (see Table 5). These results are not discounted.

(000's US Dollars)

	<u>Total</u>
Revenues (post royalty)	USD 452 million
Operating Costs	<u>USD 162 million</u>
Operating Surplus	<u>USD 290 million</u>
Less Devt & Site Prep	<u>USD 8 million</u>
Less Plant & Infrastructure	<u>USD 17 million</u>
Surplus before Interest & Tax	<u>USD 265 million</u>

These preliminary estimates are based on:

- current resource tonnages, grades and mine plans

- preliminary estimates of overall metallurgical recoveries
- preliminary estimates of overall operating costs and capital costs pertaining to the treatment and mining methods proposed
- preliminary estimates of short to medium term metal prices

The estimated operating cost per ounce of gold for Stage 1 underground mining of predominantly Measured and Indicated Resources is estimated to be US\$174 per ounce.

Stage 2 – 50% of Inferred Resources

In addition to the discounted Measured and Indicated Resources set out above the Company has estimated that 50% of ore currently categorized as Inferred Resources may be converted into Measured and Indicated resources after further drilling and development has taken place. Assuming this occurs such resources would extend the life of the mine by 6.75 years and generate additional cash flows from underground operations as follows (See Table 6 for detail);

(000's US Dollars)

	<u>Total</u>
Revenues (post royalty)	USD 292 million
Operating Costs	<u>USD 115 million</u>
Operating Surplus	<u>USD 177 million</u>

The estimated operating cost per ounce gold for Stage 2 underground mining (50% of Inferred Resources) is estimated to be USD191 per ounce.

Critical Risk Factors

The critical risk factors associated with the project are as follows:

- Resource risk – tonnage and grade uncertainty in previously mined areas
- Dilution risk – dilution is fairly high in narrow vein operation, although ameliorated by defined limits to the veins and competent wall rocks.– estimates range from 15% - 30%. (15% has been used in Economic Assessments in Stages 1 & 2 above)
- Productivity risk – narrow vein operation does not allow a high production rate – 250,000 tpy proposed – any reduced productivity would impact on unit costs
- Mining cost risk – mining costs are rising in current world market - effect should be offset by lower labour costs in Ecuador
- Metallurgical risk – ongoing test work needs to be completed to ensure treatment plant is able to achieve high metallurgical recovery. A conservative estimate of 87% has been used in the above Stage 1 & Stage 2 Economic Assessments.
- Sovereign, Country, Geographical and Topographical risk

Whilst this Preliminary Assessment is preliminary in nature, future feasibility studies will give closer attention to the above factors to ameliorate these risks to the project.

Notwithstanding, once the mine has achieved steady state operation, it is anticipated that the overall risk level will be relatively low.

Estimated Operating Cost per Ounce Gold

Stage 1 (predominantly Measured & Indicated Resources):	\$174
Stage 2 (50% of Inferred Resources):	\$191

19. RECOMMENDATIONS

Feasibility Study

The author believes that the overall project risk is low and the potential for profitable operations is high and therefore recommends that Dynasty proceed towards the development of a feasibility study. This work should ideally include

- underground development and trial stoping
- definition and grade control drilling
- pilot treatment plant operation

This work will lead to the determination of proven ore reserves for inclusion into a definitive feasibility study.

Exploration

- ❖ It is recommended exploration be continued so as to determine the full extent of the currently identified mineralisation within the Zaruma concessions and to explore for new mineralised bodies.
- ❖ Work should continue on surface mapping and sampling along with targeted drilling below the known mineralised outcrops to determine the grade characteristics of the veins with depth.
- ❖ The spacing of this drilling should be closed to a 20m x 20m grid in the highest value/vertical metre veins to aim for the Inferred Resources to be upgraded to Indicated and/or Measured.

20. REFERENCES AND SOURCES OF INFORMATION

Dodd, K.C. 2006: "A Preliminary Summary of the Zaruma Gold Project in Ecuador" Company Report

Kalinaj, M
22nd October 2004: "Zaruma Project, Ecuador, Technical Report"
Company Report

Maynard, A.J.
21st October 2005: "Independent Geological Evaluation, Zaruma Project, El Oro Province, Ecuador" Company Report

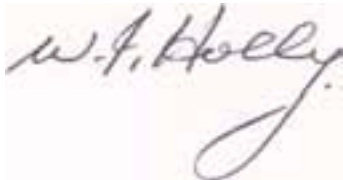
Speechly, B. 2005: Mine Plan for the Zaruma Gold Project
Company Report

Spencer, R.M., et al, 2002: The Portovelo-Zaruma Mining Camp, Southwest Ecuador. Porphyry and Epithermal Environments. SEG Newsletter, Society of Economic Geologists, 2002, Number 49, 14 p.

21. DATE AND SIGNATURE PAGE

The effective date of this Technical Report is

21 August 2006

A handwritten signature in black ink on a light-colored background. The signature is written in a cursive style and appears to read "W. J. Holly".

Signed – W J Holly AusIMM F Fin

A handwritten signature in black ink on a light-colored background. The signature is written in a cursive style and appears to read "AJ Maynard".

Signed – AJ Maynard MAIG AusIMM

22. CERTIFICATES OF QUALIFIED PERSONS

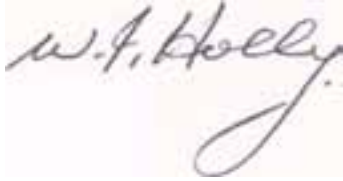
22.1 – WJ Holly

As a qualified person responsible for some sections of the report titled “Independent Preliminary Assessment Zaruma Project El Oro Province – Ecuador” dated August 20th ●, 2006 (the “Technical Report”) to which this certificate applies, I, William J. Holly, do hereby certify that:

1. I am a consulting mining engineer, conducting business under the registered name of Holly Mining Pty Ltd. (ACN 092 237 440). My address is 34 Peppermint Grove, WA, 6011 Australia.
2. I graduated with associateships in Mining Engineering and Mining Geology from WA School of Mines (Curtin University) in Western Australia. I also hold post graduate diplomas in Business (Curtin University) and in Investment and Applied Finance (Financial Services Institute of Australasia).
3. I am a member in good standing of both the AusIMM and the Financial Services Institute of Australasia
4. I have worked as a mining engineer/mining manager in the fields of mining development, operations and finance continuously for the last 35 years in all Australian States (particularly Western Australia, Queensland and New South Wales). I have also had experience with international projects in Namibia, South Africa, Zimbabwe, Pakistan, Afghanistan and Great Britain.
5. I have read the definition of “qualified person” set out in National Instrument 43-101 – *Standards of Disclosure for Mineral Projects* (“NI 43-101”) and confirm that by reason of my education, affiliation with a professional association (as defined in NI 43-101) and past relevant work experience, I fulfill the requirements to be a “qualified person” for the purposes of NI 43-101.
6. I inspected the Zaruma Project from March 1, 2006 to March 3, 2006 inclusive.
7. I am responsible for items of the Technical Report involving mine planning and operation, plant construction and operation, and preliminary economic assessment. The geology, exploration, drilling, sampling methods, sample preparation, analysis and security, data verification and adjacent properties sections of the Technical Report are repeated from previous Technical Reports and the qualified person responsible for these sections is co-author Mr AJ Maynard (see separate certificate)
8. I am independent of Dynasty Metals & Mining Inc. as described in NI 43-101.
9. I have not had any prior involvement with the Zaruma Project.
10. I have read NI 43-101 and the Technical Report has been prepared in compliance with NI 43-101.

11. As of the date of this certificate, to the best of my knowledge, information and belief, the Technical Report contains all scientific and technical information that is required to be disclosed to make the Technical Report not misleading.

Dated this 20th day of August 2006.

A handwritten signature in cursive script, appearing to read "W. J. Holly". The signature is written in dark ink on a light-colored background.

William J. Holly

William J. Holly, M AusIMM, FFin
34 Johnston Street
Peppermint Grove, WA
6008, Australia
Telephone: +618 93853430, +618419982073
Fax: +618 93851619

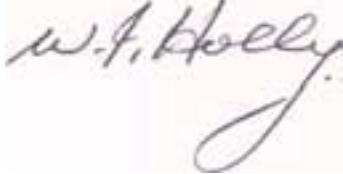
CONSENT OF CO-AUTHOR W J Holly

TO: British Columbia Securities Commission, Alberta Securities Commission, Saskatchewan Securities Commission, Manitoba Securities Commission, Ontario Securities Commission, New Brunswick Securities Commission, Securities Commission of Newfoundland and Labrador (Department of Government Securities), Nova Scotia Securities Commission and Prince Edward Island Securities Division

AND TO: TSX Venture Exchange, Toronto Stock Exchange

I, William J. Holly, do hereby consent to the public filing of the technical report titled "Independent Preliminary Assessment Zaruma Project El Oro Province – Ecuador" and dated August 20th, 2006.

Dated this 20th day of August 2006.



Signature of Qualified Person

William J. Holly

22.2 – CERTIFICATE OF QUALIFIED PERSON - AJ MAYNARD

As a qualified person responsible for some sections of the report titled “Independent Preliminary Assessment Zaruma Project El Oro Province – Ecuador” dated August 20th, 2006 (the “Technical Report”) to which this certificate applies, I, Allen J. Maynard, do hereby certify that:

1. I am a consulting geologist, conducting business under the registered name of Al Maynard & Associates (ABN 95 336 331 535). My address is Suite 9, 280 Hay Street, Subiaco, WA, 6008 Australia.
2. I graduated with a Bachelor of Applied Science degree in Geology from WA Institute of Technology (Curtin University) in Western Australia in 1978.
3. I am a member in good standing of both the AIG and the AusIMM.
4. I have worked as a geologist in the fields of mineral exploration and development, continuously for the last 28 years in all Australian States. I have also had experience with international projects in six African countries, three South American countries, central USA, southeastern Asia & China, Greenland, Portugal and Turkey.
5. I have read the definition of “qualified person” set out in National Instrument 43-101 – *Standards of Disclosure for Mineral Projects* (“NI 43-101”) and confirm that by reason of my education, affiliation with a professional association (as defined in NI 43-101) and past relevant work experience, I fulfill the requirements to be a “qualified person” for the purposes of NI 43-101.
6. I inspected the Zaruma Project during March 2005.
7. I am responsible for items of the Technical Report involving the geology, exploration, drilling, sampling methods, sample preparation, analysis and security, data verification and adjacent properties sections.
8. I am independent of Dynasty Metals & Mining Inc. as described in NI 43-101.
9. I have had a prior involvement with the Zaruma Project as described within the report.
10. I have read NI 43-101 and the Technical Report has been prepared in compliance with NI 43-101.

11. As of the date of this certificate, to the best of my knowledge, information and belief, the Technical Report contains all scientific and technical information that is required to be disclosed to make the Technical Report not misleading.



Allen J. Maynard

Dated this 20th day of August 2006.

AL MAYNARD & ASSOCIATES
Consulting Geologists

www.geological.com.au

(ABN 95 336 331 535)

9/280 Hay Street,

SUBIACO, WA, 6008

Australia

Tel: (+618) 9388 1000

Fax: (+618) 9388 1768

Mob: 04 0304 9449

A/h: (618) 9443 3333

al@geological.com.au

Australian & International Exploration & Evaluation of Mineral Properties

CONSENT OF CO-AUTHOR A J MAYNARD

TO: British Columbia Securities Commission, Alberta Securities Commission, Saskatchewan Securities Commission, Manitoba Securities Commission, Ontario Securities Commission, New Brunswick Securities Commission, Securities Commission of Newfoundland and Labrador (Department of Government Securities), Nova Scotia Securities Commission and Prince Edward Island Securities Division

AND TO: TSX Venture Exchange, Toronto Stock Exchange

Dear Madames/Sirs,

I, Allen J. Maynard, do hereby consent to the public filing of the technical report titled "Independent Preliminary Assessment Zaruma Project El Oro Province – Ecuador" and dated August 20th, 2006.



Allen J. Maynard

Dated this 20th day of August 2006.

This consent is provided on the condition that any written disclosure of the report is provided to the author for review and authorisation prior to disclosure

WJ Holly – Independent Qualified Person

AJ Maynard – Independent Qualified Person

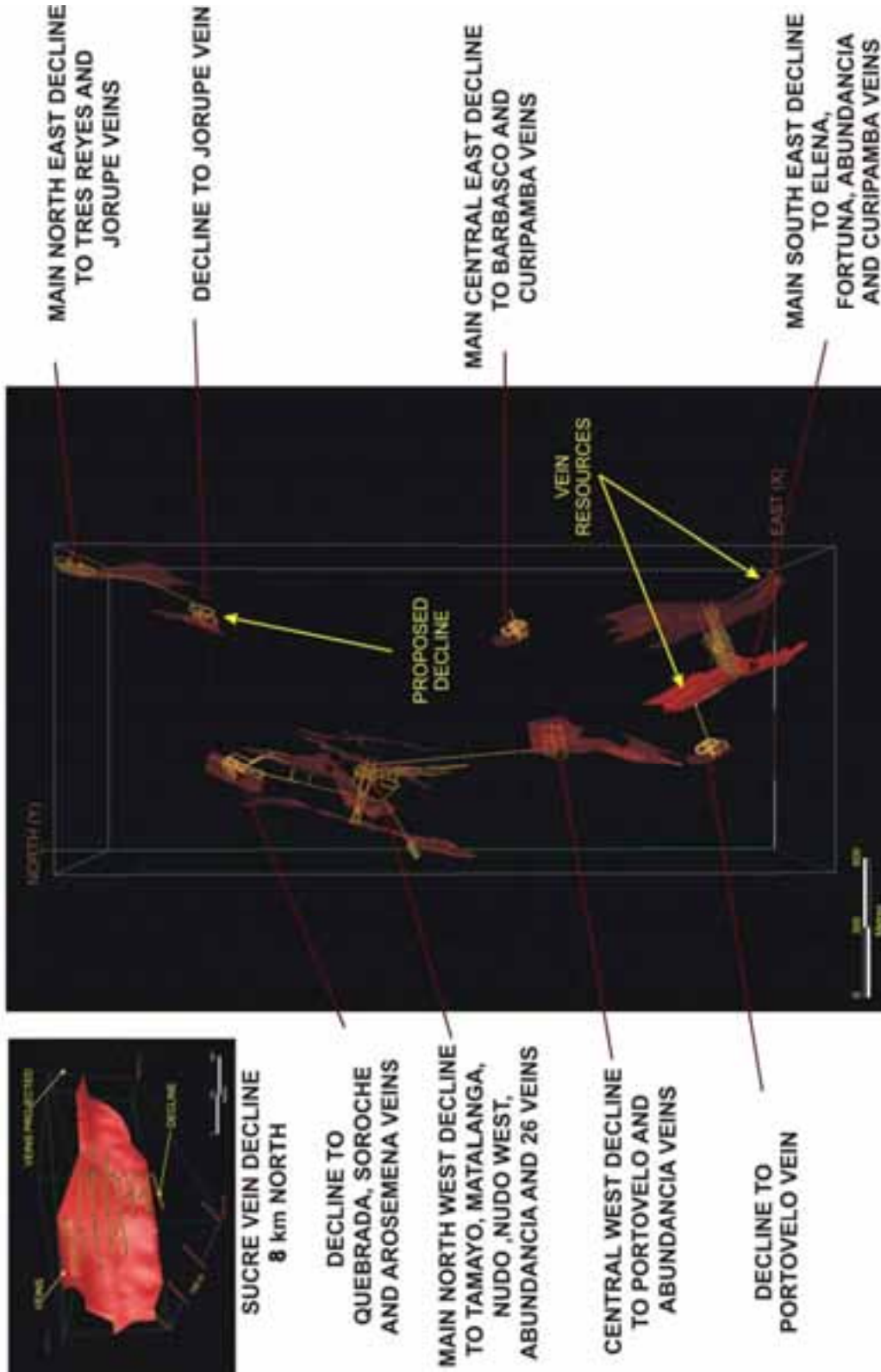
23. ADDITIONAL REQUIREMENTS FOR TECHNICAL REPORTS ON DEVELOPMENT PROPERTIES AND PRODUCTION PROPERTIES

The Zaruma Project is neither a Development nor a Production Property .
Notwithstanding all available information in this section is relevant to other sections
above, particularly MINERAL RESOURCE AND MINERAL RESERVE ESTIMATES.

24. ILLUSTRATIONS

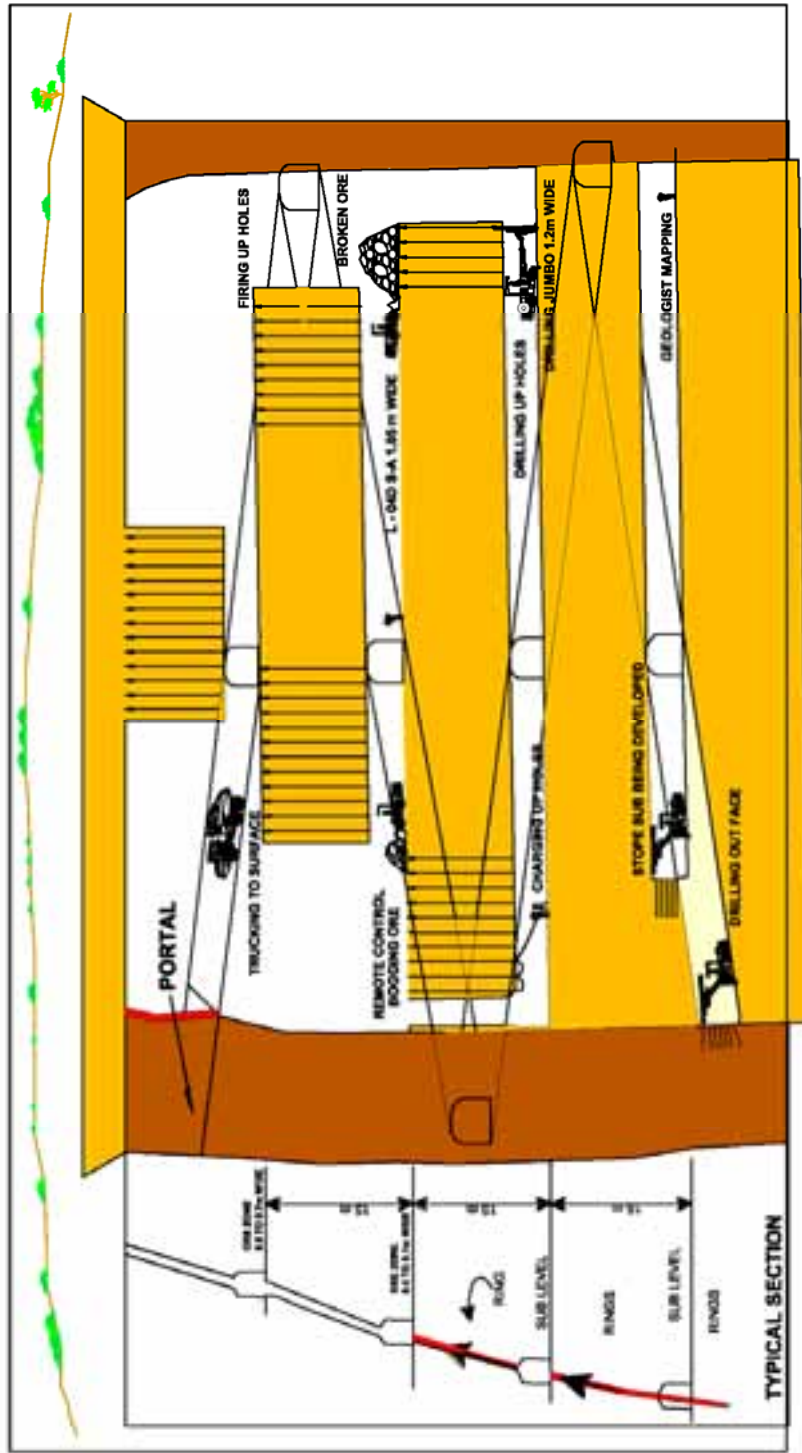
Diagrams and Plans on the following pages constitute the Mine Plan Zaruma Project.

HIGH GRADE GOLD VEIN RESOURCES INCLUDING PROPOSED DECLINES IN PRELIMINARY ASSESSMENT

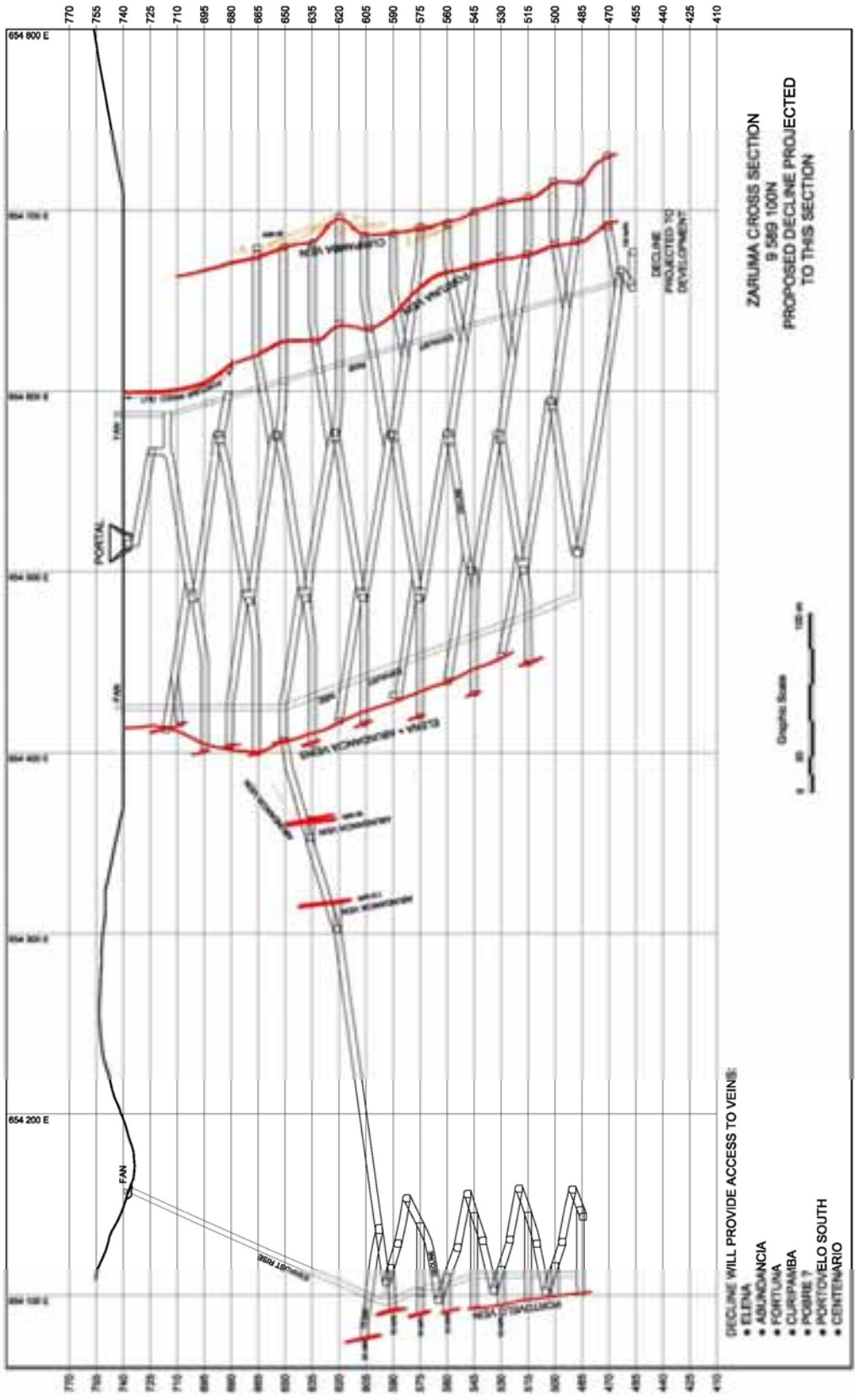


**TYPICAL LONGITUDINAL PROJECTION SHOWING UP HOLE BENCHING
 MODIFIED FOR USE IN NARROW VEIN STOPING**

All activities are shown

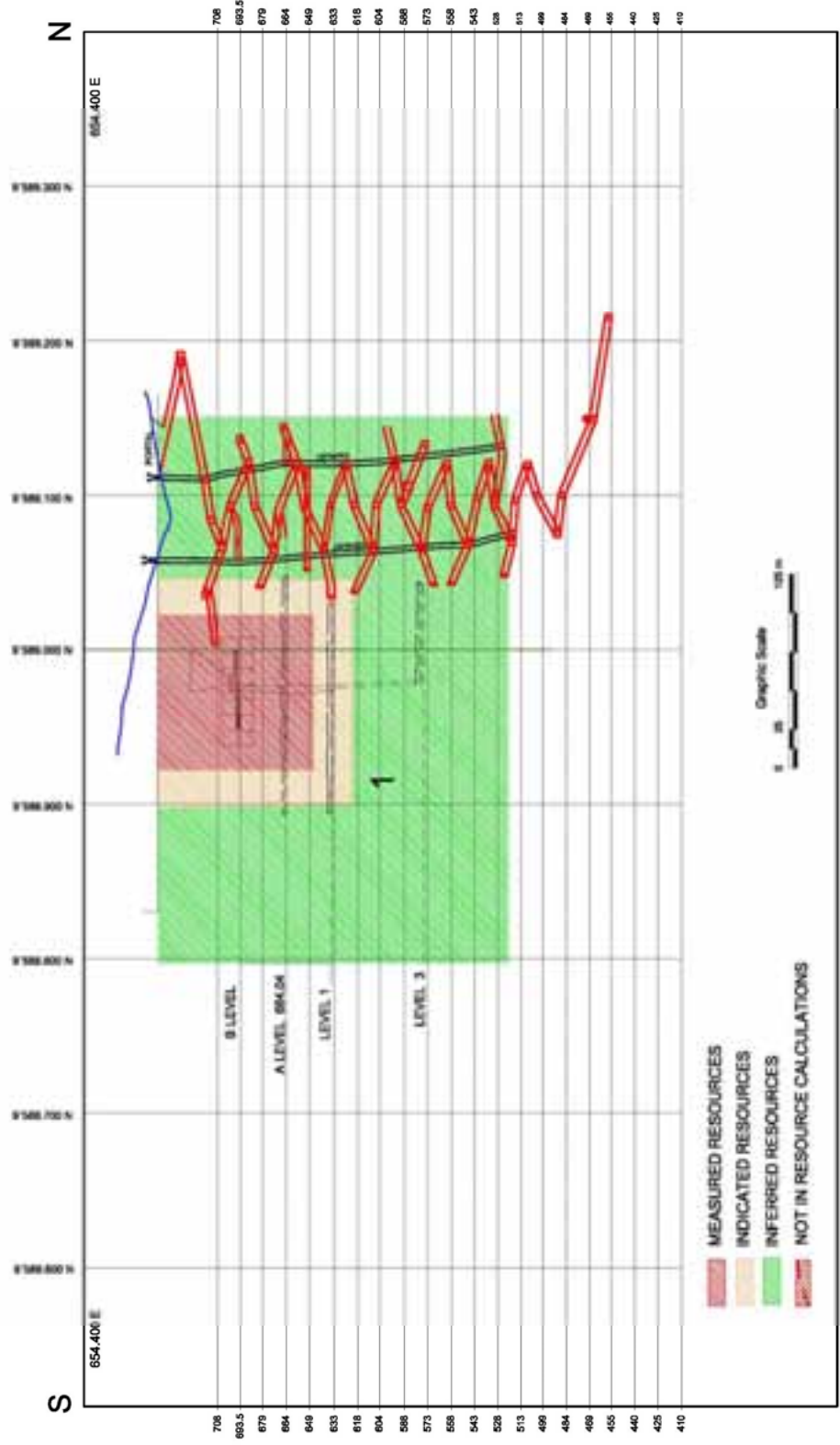


ZARUMA PROJECT PROPOSED MAIN SOUTH DECLINE



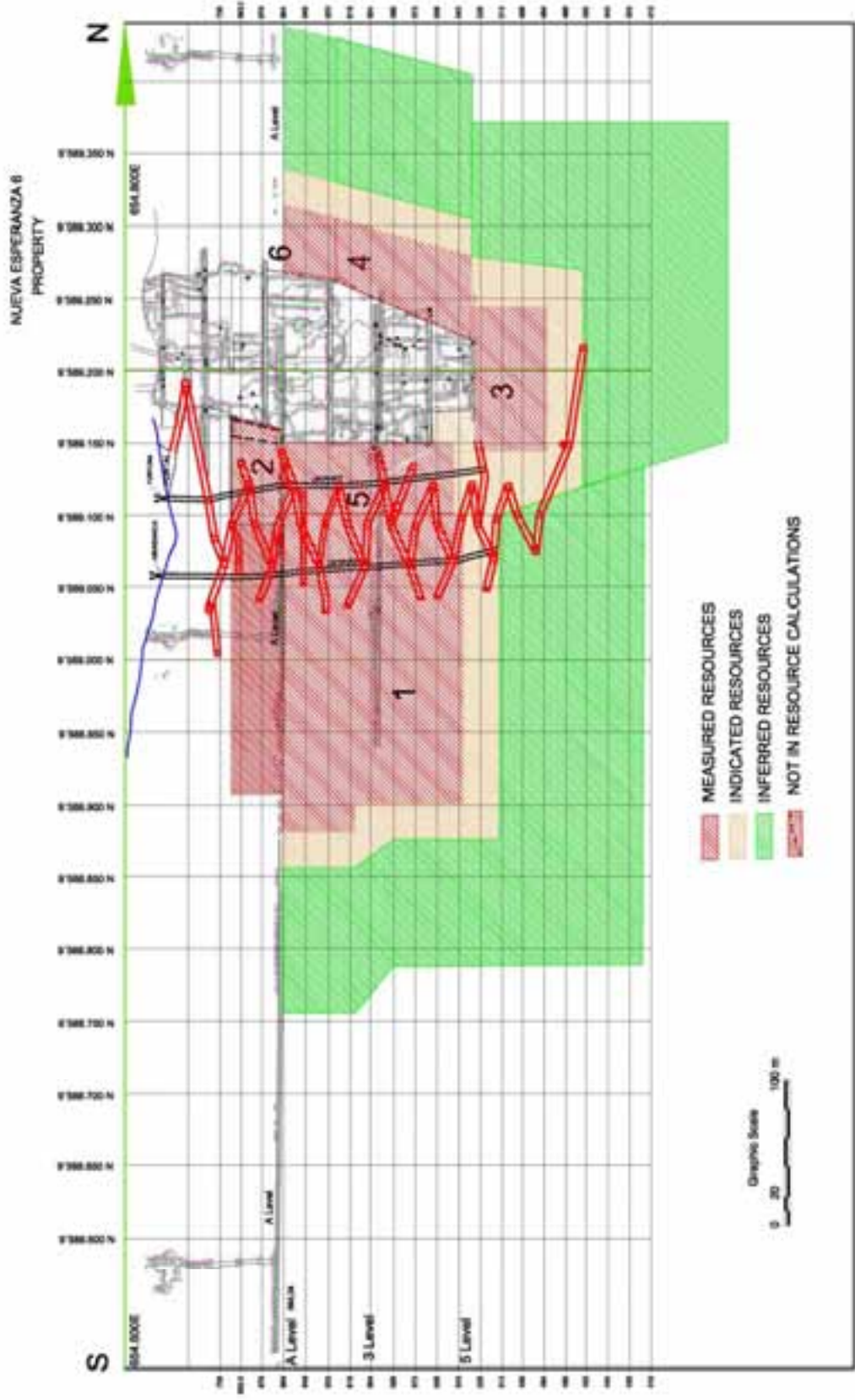
ZARUMAGOLD PROJECT ELENA VEIN

RESOURCES CALCULATION USING BLOCK METHOD

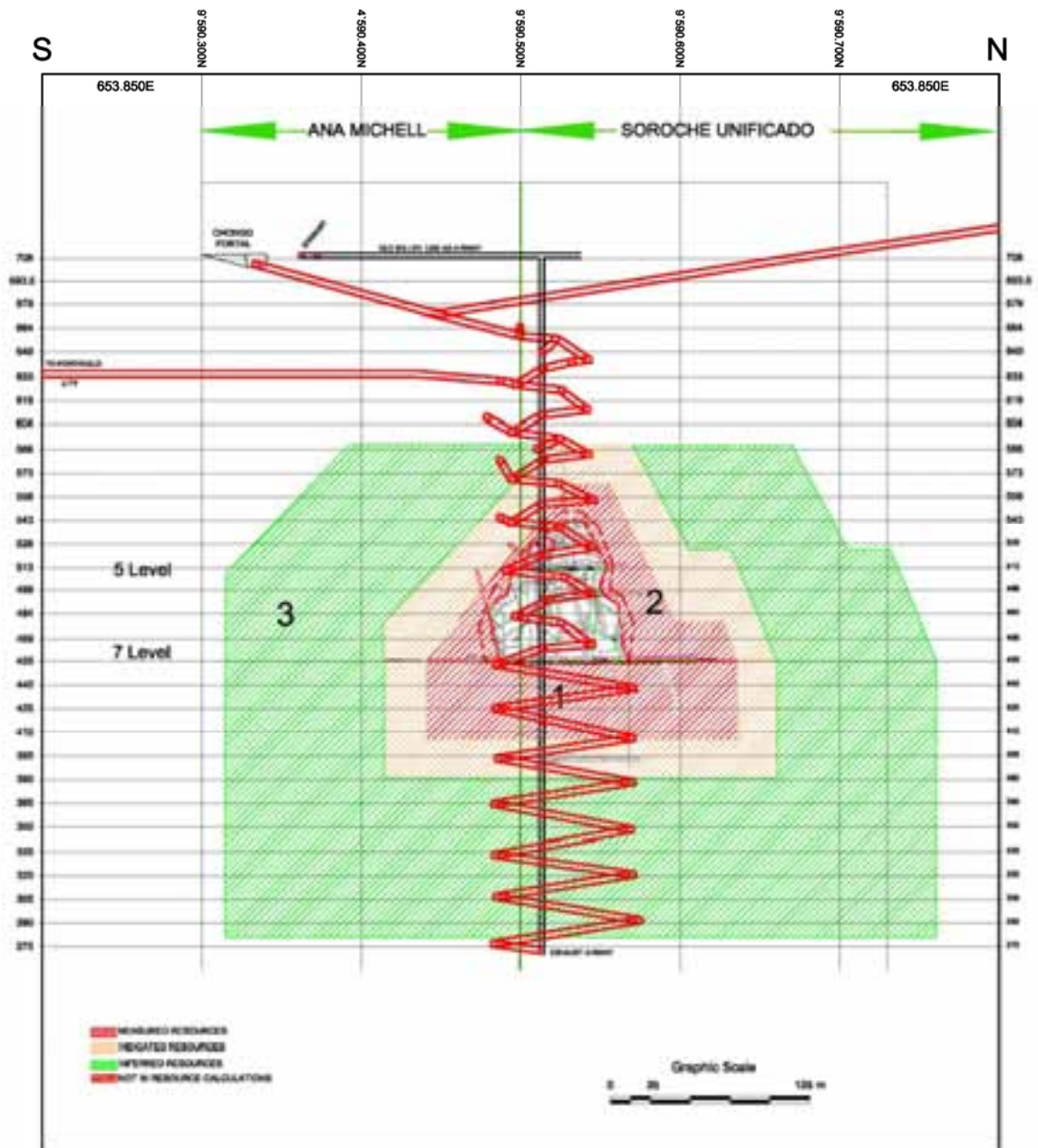


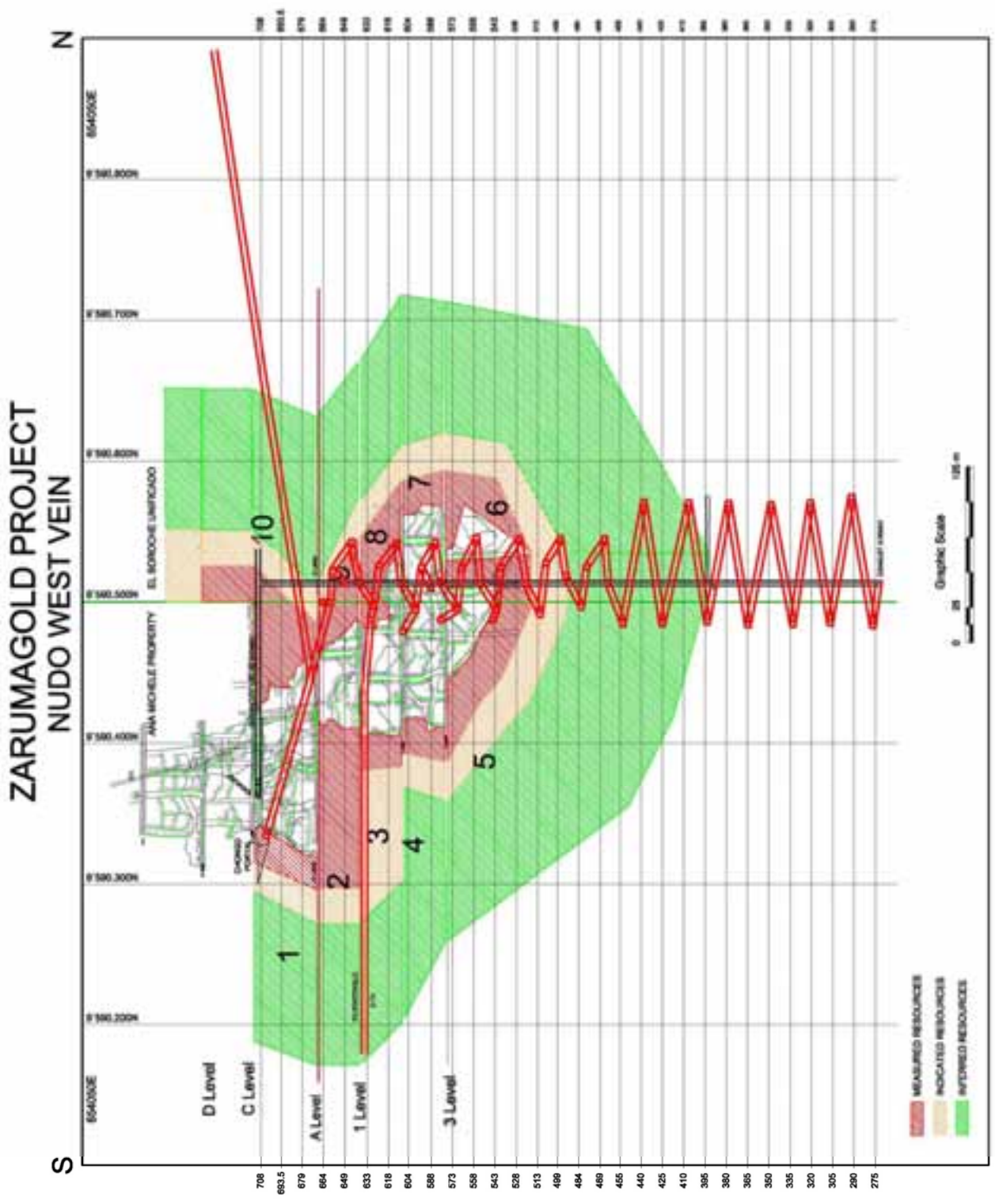
706
693.5
679
664
649
633
618
604
588
573
558
543
528
513
498
484
469
455
440
425
410

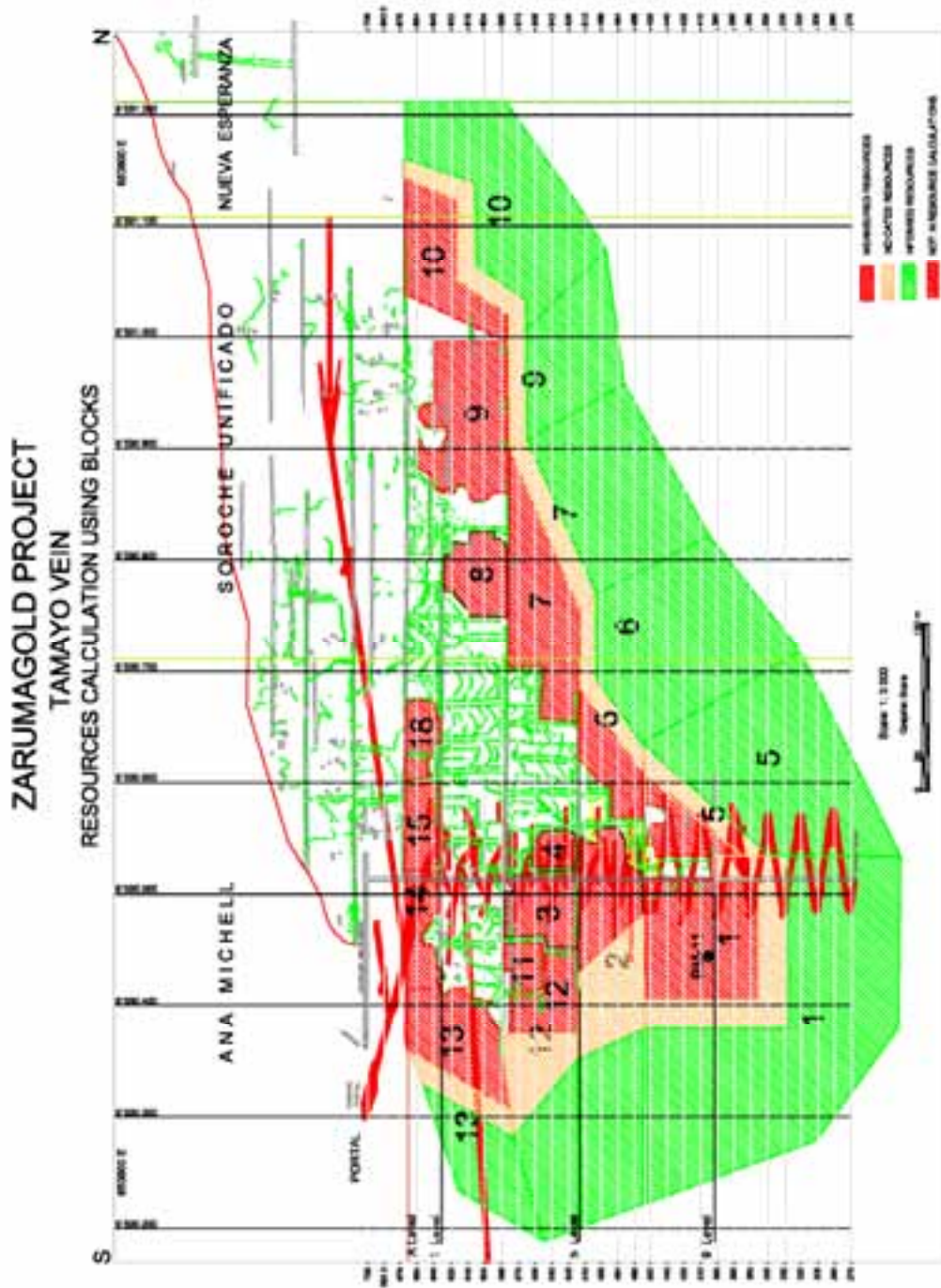
ZARUMAGOLD PROJECT FORTUNA VEIN



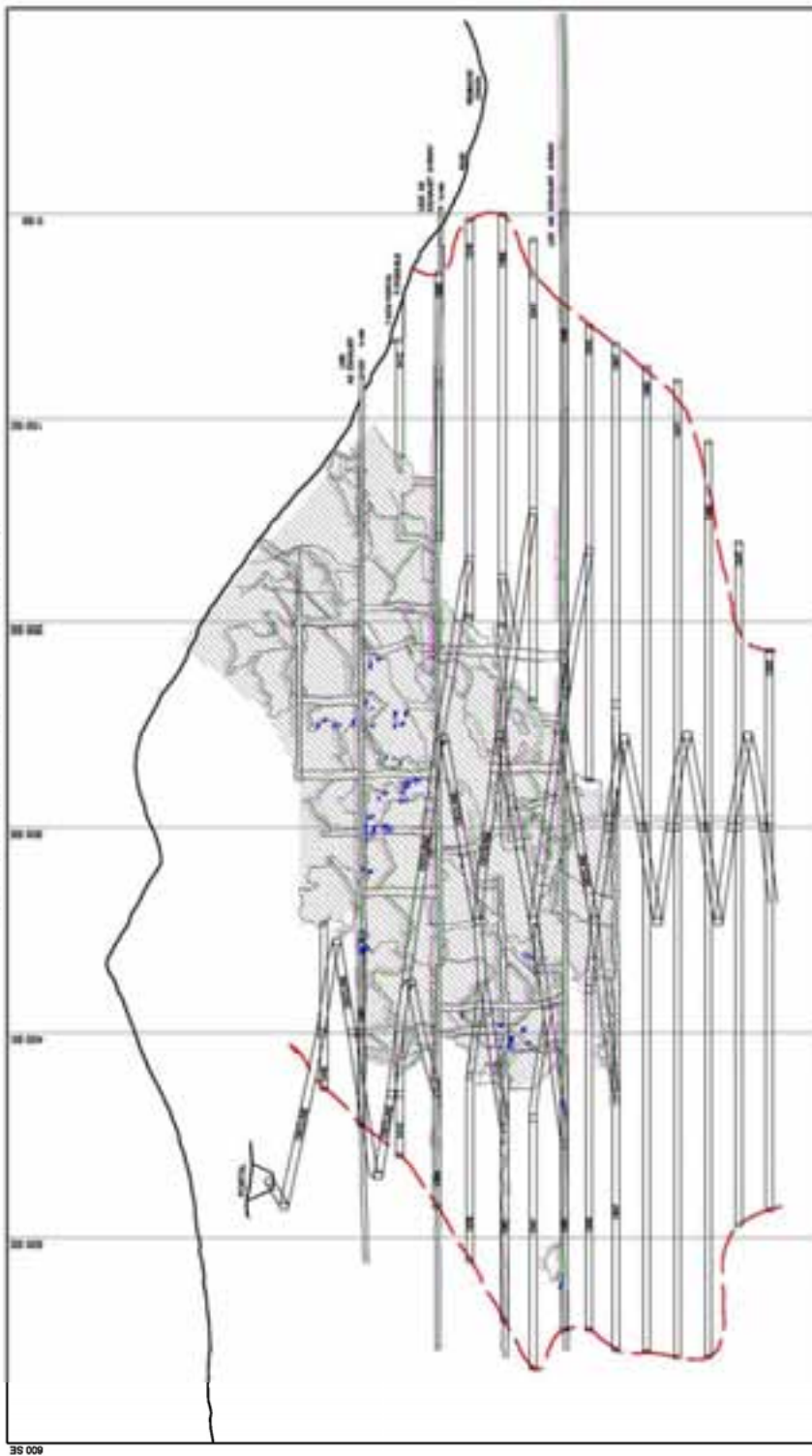
ZARUMAGOLD PROJECT MATALANGA VEIN







ZARUMA PROJECT
SUCRE VEIN LONGITUDINAL PROJECTION



35 000

Equipment:

**LOW PROFILE UNDERGROUND MINE LOADER WITH
STANDARD BUCKET 0,54 m³ (0,7 yd³),**

MICROSCOOP 100D



BASIC UNIT – MAIN COMPONENTS, AS PER SPECIFICATION L-04D S-A

Deutz F3L912 engine
 Dry type air intake
 ECS catalytic exhaust purifier
 Hydrostatic transmission
 Tamrock axles
 No spin front axle
 7.50 x 15 Michelin X Mine D2 tyres
 Bucket size 0.54 m³. Width 1.05 m, 500 BHN lip
 Lever type steering control
 Dual stick bucket and boom control
 Driving lights 2+2
 Mechanical gauges
 12 V electrical system
 JIC fittings
 3 sets of manuals (operator, parts, service)
TOTAL EX-WORK PRICE LYON, FRANCE.....

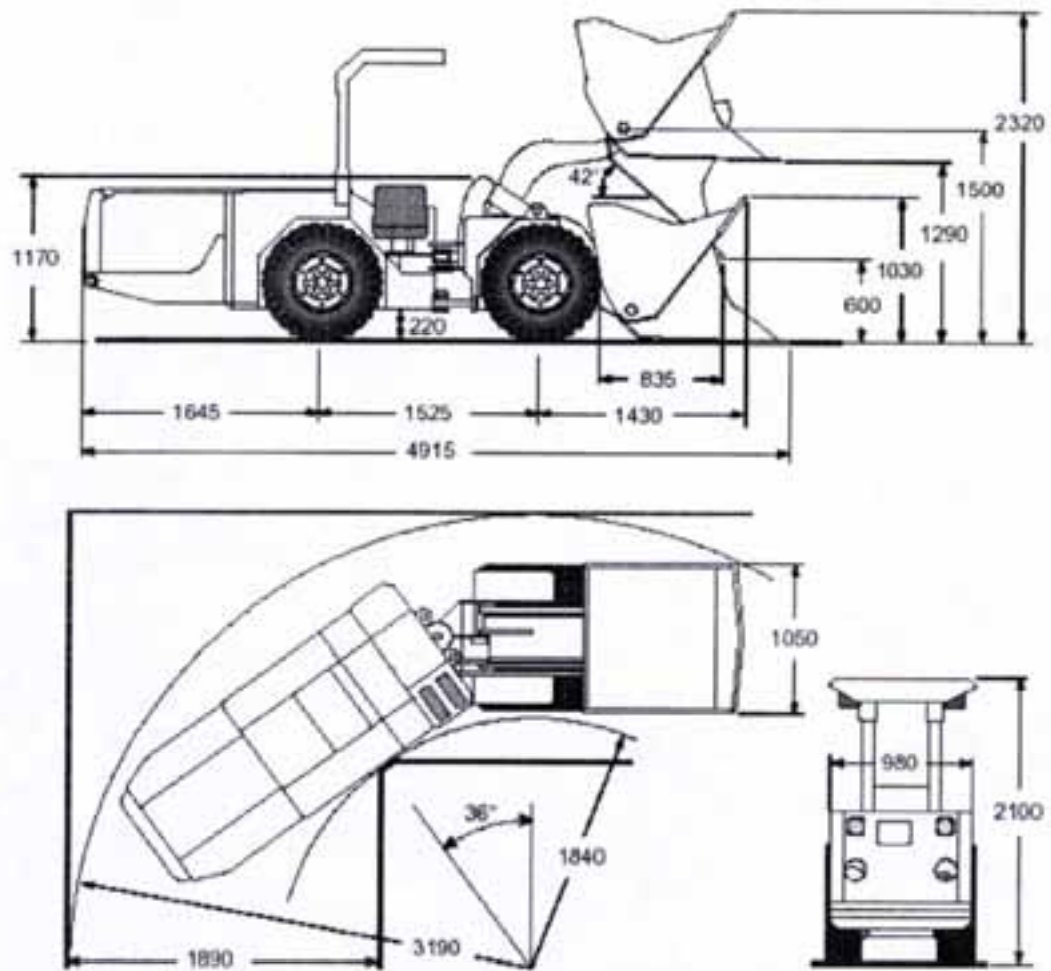
**UNITARY PRICE
USD**

150.440. –

OPTIONS:

FOPS ROPS canopy..... 4.280. –
 Back up alarm..... 690. –
 Emergency steering device..... 3.180. –
 Spare rim & tyre..... 1.150. –
TOTAL EX-WORK PRICE LYON, FRANCE..... **9.300. –**

MAIN DIMENSIONS



**LOADER 1.05 METERS WIDE
CAPACITY 1 TONNE**

Capacities

Tramming capacity	1.000 kg (2.200 lb)
Breakout force, lift	10.7 kN - 1 094 kg (2 407 lb)
Breakout force, tilt	38.9 kN - 3 766 kg (8 285 lb)
Tipping load	2.941 (6 470 lb)
Bucket std.	0.54 m ³ (0.7 yd ³), 500 BNH lip

Bucket motion times

Raising time	2.6 sec.
Lowering time	1.5 sec.
Tipping time	4.1 sec.

Weights

Operating weight	3.300 kg (7.260 lb)
Total loaded weight	4.300 kg (9.460 lb)

Axle weights without load

front axle	1.300 kg (2.860 lb)
rear axle	1.900 kg (4.180 lb)

Axle weights with load

front axle	2.800 kg (6.160 lb)
rear axle	1.400 kg (3.080 lb)

Driving speeds forward and reverse

Loaded	0 to 9 km/h(0 to 5.6 mph)
--------	---------------------------

Service capacities

Fuel tank	40 litre (10.5 gal.)
Hydraulic oil tank	62 litre (16.4 gal.)
Hydrostatic transmission oil tank	31 litre (8.2 gal.)

Engine

Diesel engine	Deutz F3L 912 W
Output	33 kW (45 hp) / 2 500 rpm
Torque	170 Nm (lb-ft) / 1500 rpm
Number of cylinders	In line 3
Displacement	2.827cm ³
Cooling system	Air cooled
Combustion principle	4-stroke, 2-stage combustion
Electric system	12 V
Air filter	Oil bath air cleaner
Exhaust system	ECS catalytic purifier

Transmission

Transmission	Hydrostatic transmission variable flow, fully reversible
Pump	Linde, 0 to 42 cm ³ / rev
Motor	Linde, fixed 35 cm ³ / rev

Transfer case

Type	Gear
Location	Rear axle

Axles

Front and rear	Tamrock, fixed No-spin in front axle
Central hinge oscillating	± 10°

Wheels

Tyres	7.50 x 15, L5
Air pressure, front & rear	350 kPa (3.5 bar)

Steering

Steering control	2 hydraulic cylinders Frame steering, control lever
Articulation angle	± 36°

Main components:

Hydraulic pump	HPI
Control valve	Danfoss
Steering cylinders (2)	ø 60 mm (2.36"), Tamrock

Pressure settings:

Main relief valve	14.0 MPa (170 bar)
Port relief valves	17.5 MPa (175 bar)

Service Brake

Actuation	Hydrostatic transmission Pedal
-----------	-----------------------------------

Parking and Emergency Brakes

Type	Hydraulic oil immersed, multiple disc brakes inclosed in the rear axle
Actuation	Emergency button, Spring applied, hydraulically released

Buckets hydraulics

Full hydraulic open center system with one gear pump. Oil flows to bucket hydraulic system from the steering pump, when steering is not used.

Equipped with mechanical dual control lever.

Main components:

Control valve	Commercial hydraulics
Lift cylinder (1)	ø 100/60 mm, Tamrock
Tilt cylinder (1)	ø 120/60 mm, Tamrock
Fittings	JIC

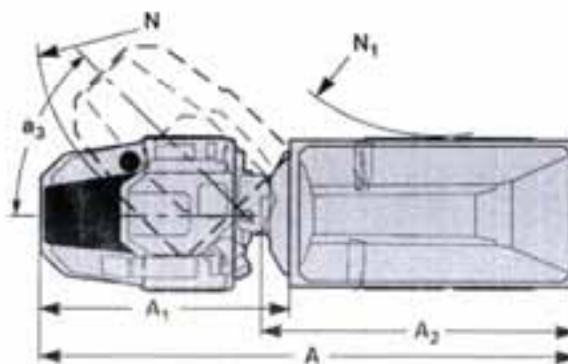
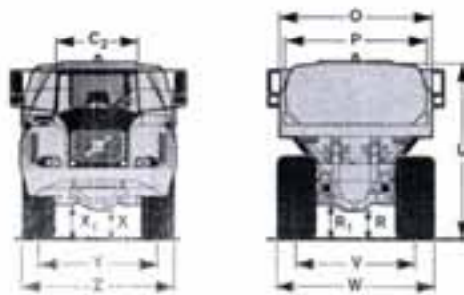
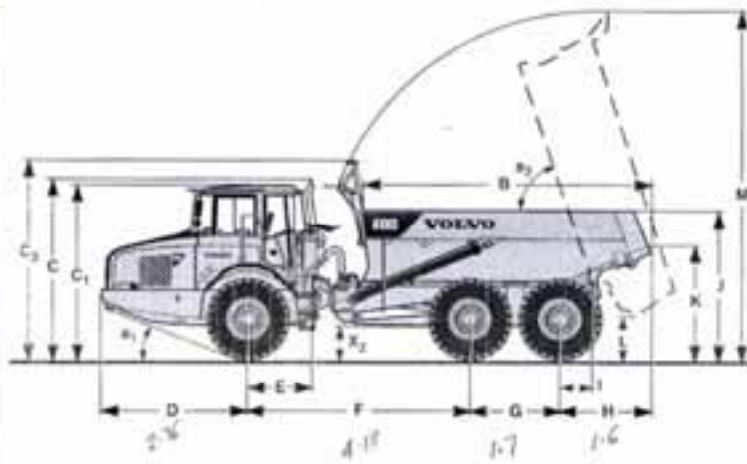
Pressure settings:

Main relief valve	14.0 MPa (140 bar)
Bucket tilt	6.0 MPa (60 bar)
Bucket roll-back	18.0 MPa (180 bar)
Boom raise	18.0 MPa (180 bar)
Boom lower	6.0 MPa (60 bar)

Specifications A25D – A30D

Pos.	Metric (mm)		Imperial (Feet)	
	A25D	A30D	A25D	A30D
A	10200	10267	336'	339'
A ₁	4354	4354	143'	143'
A ₂	5764	6002	189'	198'
B	5102	5339	168'	175'
C	3426	3426	113'	113'
C ₁	2318	2318	76'	76'
C ₂	1768	1768	58'	58'
C ₃	3760	3934	124'	127'
D	2764	2764	91'	91'
E	1212	1212	40'	40'
F	4170	4170	137'	137'
G	1870	1870	61'	61'
H	1410	1488	46'	49'
I	408	408	13'	13'
J	2776	2958	91'	98'
K	2102	2181	69'	72'
L	871	986	29'	32'
M	6300	6362	210'	212'
N	8106	8106	267'	267'
N ₁	4078	4037	135'	133'
O	2700	2900	89'	95'
P	3490	2700	115'	89'
Q	512	513	17'	17'
R ₁	634	635	21'	21'
U	3257	3310	108'	110'
V	2258	2216	74'	73'
V'	2258	73'
W	2850	2941	94'	98'
W'	2900	95'
X	454	456	15'	15'
X ₁	581	583	19'	19'
X ₂	659	659	22'	22'
Y	2258	2216	74'	73'
Y'	2258	73'
Z	2850	2941	94'	98'
Z'	2900	95'
h ₁	25.5°	23.5°
h ₂	74°	72°
h ₃	45°	45°

A25D: Unladen machine with 23.5R25
A30D: Unladen machine with 750/65R25
¹ A30D with optional 23.5R25 tire



STANDARD EQUIPMENT A25D - A30D

Safety

ROPS/ FOPS protected cab
Service platform for ease of service
Anti-slip material on hood and fenders
Hazard lights
Horn
Protective grille for rear window
Rear-view mirrors
Retractable 3-inch safety belt
Secondary steering
Steering joint locking assembly
Dump body lock
Windshield wipers with interval function
Windshield washers

Comfort

Tilt/telescopic steering wheel
Cab heater with filtered fresh air and defroster
Overhead console for radio
Sun visor
Tinted glass
Cup holder/storage tray
Cigarette lighter
Ashtray
Space for lunch cooler
Storage box
Instruction seat with seat belt

Engine

Diesel injected, electronically controlled
Turbocharged, intercooled
Remote oil drain plug
Reserve oil filter, for ease of access
Preheater for easier cold starts

Electrical system

80 A alternator
Battery disconnect switch
Extra 24 V socket for lunch cooler
Lights:
• Headlights
• Parking lights
• Direction indicators
• Rear lights
• Back-up lights
• Brake lights
• Cab lighting
• Instrument lighting

Operator information interface

Gauges:
• Speedometer
• Tachometer
• Brake pressure
• Fuel
• Transmission oil temperature

Push lights for all switches

Warning lights grouped and easy to read

Central warning (3 levels) for all vital functions

Central pushover information display

• Automatic pre-start checks
• Operation information, easy-to-read menu
• Troubleshooting diagnostics
• Hour meter
• Clock
• Machine settings

Drivetrain

Automatic transmission
Torque converter with automatic lock-up
Dryflex single-stage
Hydraulic variable retarder
64 or 66l optional selectable drive modes
100% longitudinal differential lock
100% differential locks in all axles

Brakes

Air hydraulic disc brakes
Two circuit brake system
Parking brake on prop shaft

Body

Body prepared for exhaust heating
Load and Dump brake

Tires

A25D: 23.5R25
A30D: 750R60R25

Other

Air drier

OPTIONAL EQUIPMENT A25D - A30D

(Standard on certain markets)

Safety

Fire extinguisher and first aid kit

Service and maintenance

Tool kit with tire inflation unit
Electrical hood opening

Engine

Extra air cleaner, heavy-duty
Electric engine heater (120V or 240V)
External emergency engine stop
Delayed engine stop

Electrical

Work lights, roof mounted
Work lights, rear facing, fender-mounted
Rotating beacon, collapsible mount
Back-up alarm
Rear vision system
Anti-stuff system (prevents engine start)
Headlights for left hand traffic

Cab

Air suspended, electrically heated operator's seat
Electrically heated rear view mirrors
Air conditioning
Radio installation kit
Radio
Cable kit for cab heater (120V or 240V)
Window tint film

Body

Body exhaust heating kit

A25D

Underhung tailgate, link operated
Overhung tailgate, link operated (only in combination with underhung gate)
Overhung tailgate, wire operated

A30D

Underhung tailgate, link operated
Overhung tailgate, wire operated

Wear plates

Extra front spillguard
Upper side extension, 200 mm

Tires

A30D: 23.5R25

External

Rear mufflers

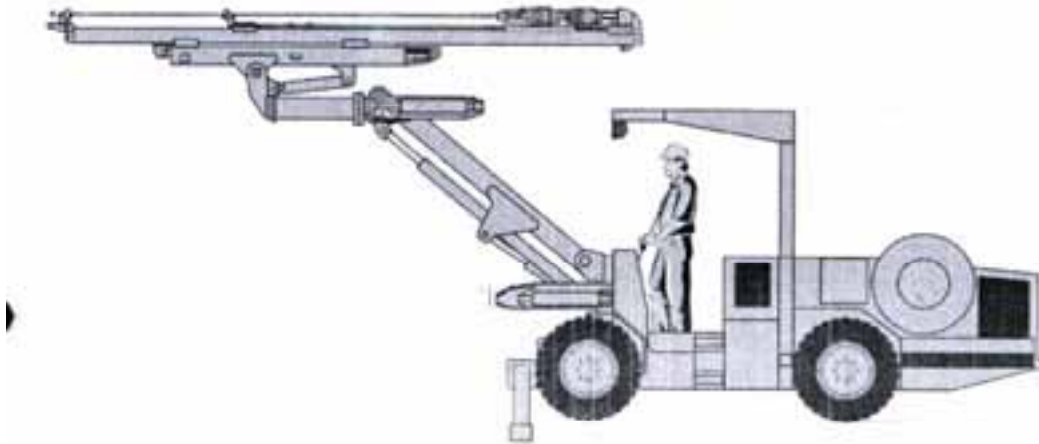
Other

Synthetic hydraulic oil (biologically degradable)
Anti-tilt kit
Toolbox
Towing Hitch

Under our policy of continual product improvement, we reserve the right to change specifications and design without prior notice. The illustrations do not necessarily show the standard version of the machine.

Technical Specification
6-110 S-C
2003-01-27

QUASAR 1F



APPLICATION

The Tamrock Quasar 1F is a compact and flexible single boom electro hydraulic jumbo for mining development in cross sections up to 24 m².

The robust universal boom have a large optimum shaped coverage, 360° rotation and full automatic parallelism for fast and easy face drilling. The boom can also be used for cross-cutting and bolt-hole drilling.

The jumbo layout is designed for good visibility and balance, this and the powerful four-wheel-drive articulated carrier ensure fast and safe manoeuvring in small drifts.

The high performance drilling system allows high drilling performance with good drill steel economy and high machine reliability.

The operator environment and added automatic functions allow the operator to concentrate on safe, fast and accurate drilling.

All the service points are well protected but easy to access.

MAIN SPECIFICATIONS

Carrier	1 x Quasar
Rock drill	1 x X 2 F
Boom	1 x B 14 F
Feed	1 x CC 2500
Length	9 090 mm
Width	1 200 mm
Height	roof down 1 850 mm roof up 2 750 mm
Turning radius	5 100 / 3 400 mm
Tramming speed	horizontal 6.5 kph 13% = 1,7 = 8° 4 kph
Gradeability, maxi	35 %
Noise level	< 98 dB(A)
Weight	9 100 kg

SANDVIK

Client/ Customer: ELIPE-DYNASTY MINERALS ECUADOR	Order / Quotation No.: 2006/135	Page / Page: 1 / 4
Machine / Model:	Fecha / Date: March 29, 2006	
Project/ Project:	TWO BOOM ELECTROHYDRAULIC JUMBO AXERA 6 -225	



Application

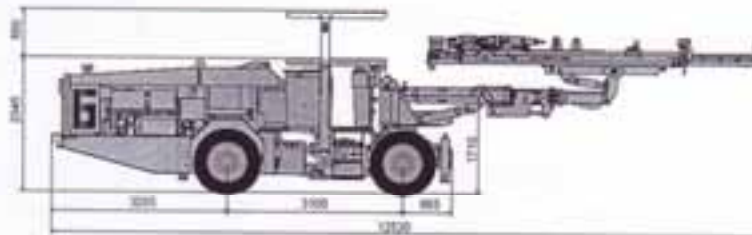
The Tamrock Axera 6-225 is a compact two boom electrohydraulic jumbo for fast and accurate drilling in drifting and tunneling of 6 - 40 m² cross sections.

The hydraulic controlled drilling system with added automatic functions allows high drilling performance with good drill steel economy and high machine reliability.

The B 26 F universal booms have a large optimum shaped coverage and full automatic parallelism. The booms can also be used for cross-cutting and bolt hole drilling.

The powerful 4-wheel-drive center articulated carrier ensures rapid and safe tramming with good balance.

General dimensions:



SANDVIK DEL PERU S.A.
Av. Defensores del Morro 1832
Chomitos, Lima - PERU

SANDVIK

Client/ Customer: ELIPE-DYNASTY MINERALS ECUADOR	Order / Orden No: 2006/136	Boja / Page: 1 / 5
	Fecha / Date: March 29, 2006	
Presente/ Project:	LOW PROFILE UNDERGROUND LOADER TORO 007	

**Basic Unit – Standard components:**

ENGINE	Detroit S-50 DDEC, 187kW (250hp) air filtering DONALDSON double wall exhaust pipe with catalytic purifier/muffler	
CONVERTER/TRANSMISSION	Dana SOH, MHR	
AXLES	Dana SOH, Posi-Stop brakes, Posi-Torq differentials, el. driven pump for brake releasing	
TYRES	18.00 x 25 L55 / B8	
BUCKET	size 4,6 m ³ , width 2550 mm, HB500/400	
CANOPY	ROPS/FOPS safety canopy, height 2395 mm	
TANKS	welded to frame	
STEERING	hydraulic joystick steering with interlock hydraulic joystick bucket and boom control	
INSTRUMENTS	electrical, logic controlled gear selection, with buttons	
GREASING	electrical gauges, signal light hydr.oil level and fuel gauge centralized manual lubrication dog bone pins with grease chamber	
LIGHTS	driving lights and parking lights	
HYDRAULICS	oil coolers for transmission & hydraulics, up to 55°C ambient capability ORFS-fittings & high temperature hosing	
OTHERS	Automatic brake activation ABA	
MANUALS	1 x Instructions, 1 x Spare part, 1 x Workshop (1pc) decals languages Spanish	
TOTAL EX-WORK TURKU, FINLAND		EX-WORK PRICE USD \$ 401.880. -

SANDVIK DEL PERU S.A.
Av. Defensores del Morro 1632
Chorrillos, Lima - PERU

SANDVIK

Client / Customer: ELIPE-DYNASTY MINERALS ECUADOR	Order / Quote No: 2006/136	Revis / Page: 2 / 5
	Fecha / Date: March 29, 2006	
Presente / Project:	LOW PROFILE UNDERGROUND LOADER TORO 007	

Options proposed:

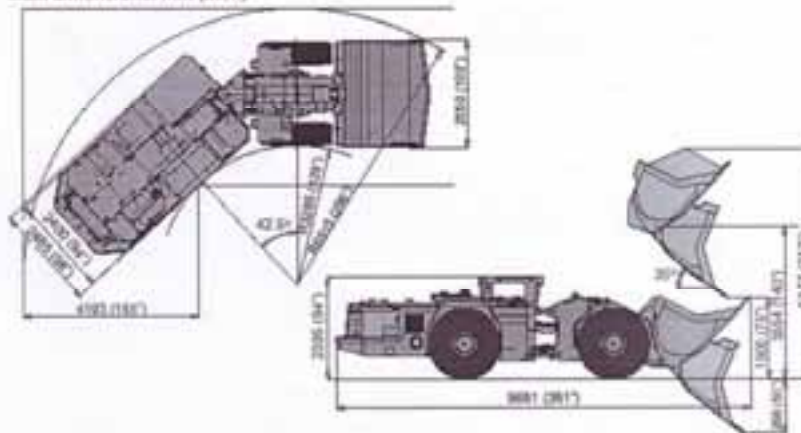
* bucket size 5.4 m3, width 2550 mm, HB500/400.....	\$ 670.-
*Automatic central lubrication, dogbone excluded.....	\$ 5.120.-
automatic gear shift control.....	\$ 3.290.-
fire suppression system ANSUL, two tanks, 8 nozzles (CEN).....	\$ 5.930.-
spare rim (18.00-25).....	\$ 1.200.-
TOTAL EX-WORK TURKU, FINLAND.....	\$ 16.190.-

* replaces standard components

TOTAL EX-WORK TURKU, FINLAND - BASIC UNIT + OPTIONS.....	\$ 418.060.-
---	---------------------

G

Main dimensions: mm (inch)



SANDVIK DEL PERU S.A.
Av. Defensores del Morro 1622
Chorrillos, Lima - PERU